

For Research Use Only

Phospho-JUN (Ser63) Polyclonal antibody

Catalog Number: 28907-1-AP



Basic Information

Catalog Number:

28907-1-AP

Size:

220 µg/ml

Source:

Rabbit

Isotype:

IgG

GenBank Accession Number:

BC068522

GeneID (NCBI):

3725

UNIPROT ID:

P05412

Full Name:

jun oncogene

Calculated MW:

331 aa, 36 kDa

Observed MW:

40-45 kDa

Purification Method:

Antigen affinity purification

Recommended Dilutions:

WB 1:500-1:1000

Applications

Tested Applications:

WB, ELISA

Species Specificity:

human

Positive Controls:

WB : Anisomycin treated NIH/3T3 cells,

Background Information

JUN, the most extensively studied protein of the activator protein-1 (AP-1) complex, is involved in numerous cell activities, such as proliferation, apoptosis, survival, tumorigenesis and tissue morphogenesis (PMID: 22180088). JUN is a transcription factor that recognizes and binds to the enhancer heptamer motif 5'-TGA[CG]TCA-3'. It promotes activity of NR5A1 when phosphorylated by HIPK3 leading to increased steroidogenic gene expression upon cAMP signaling pathway stimulation. JUN is a basic leucine zipper (bZIP) transcription factor that acts as homo- or heterodimer, binding to DNA and regulating gene transcription (PMID: 9732876).

Storage

Storage:

Store at -20°C. Stable for one year after shipment.

Storage Buffer:

PBS with 0.02% sodium azide and 50% glycerol pH 7.3.

Aliquoting is unnecessary for -20°C storage

For technical support and original validation data for this product please contact:

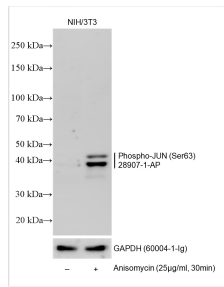
T: 4006900926

E: Proteintech-CN@ptglab.com

W: ptgcn.com

This product is exclusively available under Proteintech Group brand and is not available to purchase from any other manufacturer.

Selected Validation Data



Non treated and Anisomycin treated NIH/3T3 cells were subjected to SDS PAGE followed by western blot with 28907-1-AP (Phospho-JUN (Ser63) antibody) at dilution of 1:500 incubated at room temperature for 1.5 hours. The membrane was stripped and re-blotted with GAPDH (60004-1-Ig) antibody as a loading control.