

For Research Use Only

Phospho-S6 Ribosomal protein (Ser240/244) Polyclonal antibody



Catalog Number: 29220-1-AP

Basic Information

Catalog Number:

29220-1-AP

Size:

800 µg/ml

Source:

Rabbit

Isotype:

IgG

GenBank Accession Number:

NM_001010

GeneID (NCBI):

6194

UNIPROT ID:

P62753

Full Name:

ribosomal protein S6

Observed MW:

32 kDa

Purification Method:

Antigen affinity purification

Recommended Dilutions:

WB 1:1000-1:6000

Applications

Tested Applications:

WB, ELISA

Species Specificity:

Human, Mouse

Positive Controls:

WB : 10 % fetal bovine serum treated NIH/3T3 cells,

Background Information

Ribosomal protein S6 (RPS6), also named as Phosphoprotein NP33, may play an important role in controlling cell growth and proliferation through the selective translation of particular classes of mRNA. Ribosomal protein S6 is the major substrate of protein kinases in eukaryote ribosomes. The phosphorylation is stimulated by growth factors, tumor promoting agents, and mitogens and is dephosphorylated at growth arrest.

Storage

Storage:

Store at -20°C. Stable for one year after shipment.

Storage Buffer:

PBS with 0.02% sodium azide and 50% glycerol pH 7.3.

Aliquoting is unnecessary for -20°C storage

For technical support and original validation data for this product please contact:

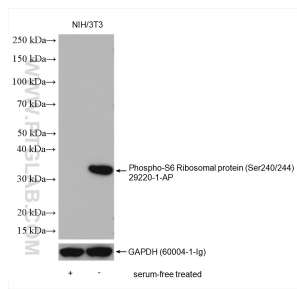
T: 4006900926

E: Proteintech-CN@ptglab.com

W: ptgcn.com

This product is exclusively available under Proteintech Group brand and is not available to purchase from any other manufacturer.

Selected Validation Data



Serum-free treated NIH/3T3 cells and 10 % fetal bovine serum treated NIH/3T3 cells were subjected to SDS PAGE followed by western blot with 29220-1-AP (Phospho-S6 Ribosomal protein (Ser240/244) antibody) at dilution of 1:3000 incubated at 4 °C overnight. The membrane was stripped and re-blotted with GAPDH antibody as loading control.