

For Research Use Only

Phospho-MAP2K4 (Ser257/Thr261) Polyclonal antibody



Catalog Number: 29250-1-AP

1 Publications

Basic Information

Catalog Number:

29250-1-AP

Size:

700 µg/ml

Source:

Rabbit

Isotype:

IgG

GenBank Accession Number:

BC036032

GeneID (NCBI):

6416

UNIPROT ID:

P45985

Full Name:

mitogen-activated protein kinase
kinase 4

Calculated MW:

399 aa, 44 kDa

Observed MW:

44-50 kDa

Purification Method:

Antigen affinity purification

Recommended Dilutions:

WB 1:500-1:2000

Applications

Tested Applications:

WB, ELISA

Cited Applications:

WB

Species Specificity:

Human

Cited Species:

mouse

Positive Controls:

WB : PDGF treated PC-3 cells,

Background Information

Mitogen-activated protein kinase kinase 4 (MAP2K4), also known as MAP kinase kinase 4 (MKK4), is a second-level kinase in the hierarchical mitogen-activated protein kinase (MAPK) pathway and is regulated by Ras. MAP2K4 has been found to be stably mutated in 3-5 % of cancers, such as ovarian, prostate, and liver cancers. MAP2K4 is activated by MEK1 or ASK1/TAK1/MLK3. It is unique among all known MAP2Ks in its ability to phosphorylate two different MAPKs, p38 and JNK (c-Jun N-terminal kinase), respectively. (PMID: 24487067, PMID: 33341545)

Notable Publications

Author	Pubmed ID	Journal	Application
Zhong Xian	37062136	Phytomedicine	WB

Storage

Storage:

Store at -20°C. Stable for one year after shipment.

Storage Buffer:

PBS with 0.02% sodium azide and 50% glycerol pH 7.3.

Aliquoting is unnecessary for -20°C storage

For technical support and original validation data for this product please contact:

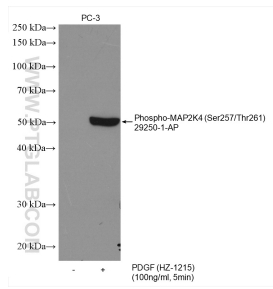
T: 4006900926

E: Proteintech-CN@ptglab.com

W: ptgcn.com

This product is exclusively available under Proteintech Group brand and is not available to purchase from any other manufacturer.

Selected Validation Data



Non-treated PC-3 cells and PDGF (HZ-1215) treated PC-3 cells were subjected to SDS PAGE followed by western blot with 29250-1-AP (Phospho-MAP2K4 (Ser257/Thr261) antibody) at dilution of 1:1000 incubated at room temperature for 1.5 hours.