

For Research Use Only

# Cyclin G Polyclonal antibody

Catalog Number: 29306-1-AP



## Basic Information

Catalog Number:

29306-1-AP

Size:

350 µg/ml

Source:

Rabbit

Isotype:

IgG

Immunogen Catalog Number:

AG30937

GenBank Accession Number:

BC007093

GeneID (NCBI):

900

UNIPROT ID:

P51959

Full Name:

cyclin G1

Calculated MW:

34 kDa

Observed MW:

34 kDa

Purification Method:

Antigen affinity purification

Recommended Dilutions:

WB 1:500-1:1000

## Applications

Tested Applications:

WB, ELISA

Species Specificity:

Human

Positive Controls:

WB : MDA-MB-231 cells, MDA-MB-453s cells, T-47D cells

## Background Information

Cyclin G is also named as CCNG, CYCG1 and CCNG1, and belongs to the cyclin family. Cyclin G may play a role in growth regulation. Cyclin G is associated with G2/M phase arrest in response to DNA damage. And it may be an intermediate by which p53 mediates its role as an inhibitor of cellular proliferation, and levels of Cyclin G are increased after induction of p53 by DNA damage (PMID:12015958). Cyclin G is high levels in skeletal muscle, ovary, kidney and colon. Cyclin G is very low levels in normal cells during G1 phase, which increase as cells enter the S phase and stay high throughout the S and G2/M phases. In breast cancer cells, consistent high levels of Cyclin G are found throughout the cell cycle (PMID:11063931).

## Storage

Storage:

Store at -20°C. Stable for one year after shipment.

Storage Buffer:

PBS with 0.02% sodium azide and 50% glycerol pH 7.3.

Aliquoting is unnecessary for -20°C storage

For technical support and original validation data for this product please contact:

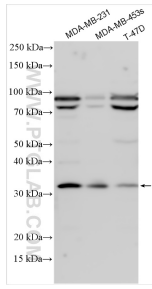
T: 4006900926

E: [Proteintech-CN@ptglab.com](mailto:Proteintech-CN@ptglab.com)

W: [ptgcn.com](http://ptgcn.com)

**This product is exclusively available under Proteintech Group brand and is not available to purchase from any other manufacturer.**

## Selected Validation Data



Various lysates were subjected to SDS PAGE followed by western blot with 29306-1-AP (Cyclin G antibody) at dilution of 1:800 incubated at room temperature for 1.5 hours.