

For Research Use Only

SEC16A Polyclonal antibody

Catalog Number: 29417-1-AP



Basic Information

Catalog Number: 29417-1-AP	GenBank Accession Number: NM_014866	Purification Method: Antigen affinity purification
Size: 700 ug/ml	GeneID (NCBI): 9919	Recommended Dilutions: WB 1:1000-1:4000 IHC 1:50-1:500 IF/ICC 1:200-1:800
Source: Rabbit	UNIPROT ID: O15027	
Isotype: IgG	Full Name: SEC16 homolog A (S. cerevisiae)	
Immunogen Catalog Number: AG30700	Calculated MW: 252 kDa	
	Observed MW: 250-300 kDa	

Applications

Tested Applications: WB, IHC, IF/ICC, FC (Intra), ELISA	Positive Controls: WB : HEK-293 cells, HepG2 cells, HeLa cells IHC : mouse pancreas tissue, IF/ICC : HeLa cells,
Species Specificity: human, mouse	
Note-IHC: suggested antigen retrieval with TE buffer pH 9.0; (*) Alternatively, antigen retrieval may be performed with citrate buffer pH 6.0	

Background Information

SEC16A, also named as KIAA0310, SEC16 and SEC16L, is required for secretory cargo traffic from the endoplasmic reticulum to the Golgi apparatus. SAR1A-GTP-dependent assembly of SEC16A on the ER membrane forms an organized scaffold defining an ERES. SEC16A is required for normal transitional endoplasmic reticulum (tER) organization.

Storage

Storage:
Store at -20°C. Stable for one year after shipment.
Storage Buffer:
PBS with 0.02% sodium azide and 50% glycerol pH 7.3.
Aliquoting is unnecessary for -20°C storage

For technical support and original validation data for this product please contact:

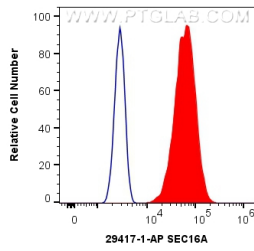
T: 4006900926

E: Proteintech-CN@ptglab.com

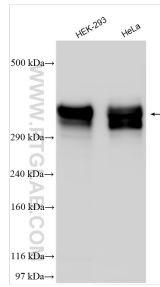
W: ptgcn.com

This product is exclusively available under Proteintech Group brand and is not available to purchase from any other manufacturer.

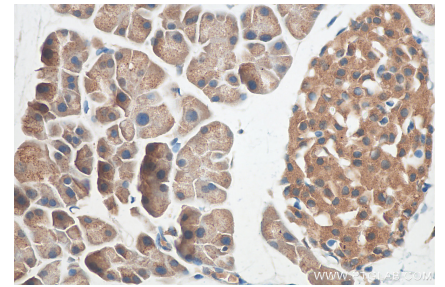
Selected Validation Data



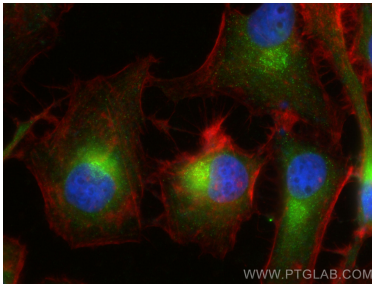
1X10⁶ HeLa cells were intracellularly stained with 0.4 ug Anti-Human SEC16A (29417-1-AP) and CoraLite®488-Conjugated AffiniPure Goat Anti-Rabbit IgG(H+L) at dilution 1:1000 (red), or 0.4 ug Isotype Control. Cells were fixed with 4% PFA and permeabilized with Flow Cytometry Perm Buffer (PF00011-C).



Various lysates were subjected to Tris-acetate gel system followed by western blot with 29417-1-AP (SEC16A antibody) at dilution of 1:2000 incubated at room temperature for 1.5 hours.



Immunohistochemical analysis of paraffin-embedded mouse pancreas tissue slide using 29417-1-AP (SEC16A antibody) at dilution of 1:200 (under 40x lens). Heat mediated antigen retrieval with Tris-EDTA buffer (pH 9.0).



Immunofluorescent analysis of (-20°C Ethanol) fixed HeLa cells using SEC16A antibody (29417-1-AP) at dilution of 1:400 and CoraLite®488-Conjugated AffiniPure Goat Anti-Rabbit IgG(H+L) (SA00013-2), CL594-phalloidin (red).