

For Research Use Only

# BRCA2 Polyclonal antibody

Catalog Number: 29450-1-AP **5 Publications**



## Basic Information

<b>Catalog Number:</b> 29450-1-AP	<b>GenBank Accession Number:</b> NM_000059	<b>Purification Method:</b> Antigen affinity purification
<b>Size:</b> 1300 µg/ml	<b>GeneID (NCBI):</b> 675	<b>Recommended Dilutions:</b> WB 1:1000-1:8000
<b>Source:</b> Rabbit	<b>UNIPROT ID:</b> P51587	
<b>Isotype:</b> IgG	<b>Full Name:</b> breast cancer 2, early onset	
<b>Immunogen Catalog Number:</b> AG31064	<b>Calculated MW:</b> 384 kDa	
	<b>Observed MW:</b> 384 kDa	

## Applications

<b>Tested Applications:</b> WB, ELISA	<b>Positive Controls:</b> WB : HeLa cells, HepG2 cells, MCF-7 cells
<b>Cited Applications:</b> WB	
<b>Species Specificity:</b> Human	
<b>Cited Species:</b> human	

## Background Information

BRCA2, also named as FACD and FANCD1, is involved in double-strand break repair and/or homologous recombination. BRCA2 may participate in S phase checkpoint activation. Defects in BRCA2 are a cause of genetic susceptibility to breast cancer (BC) which also called susceptibility to familial breast-ovarian cancer type 2 (BROVCA2).

## Notable Publications

Author	Pubmed ID	Journal	Application
Taihao Chang	36576015	Prostate	WB
Nicole L Batenburg	38416570	Nucleic Acids Res	WB
Qingfeng Fu	38006403	Aging (Albany NY)	WB

## Storage

**Storage:**  
Store at -20°C.  
**Storage Buffer:**  
PBS with 0.02% sodium azide and 50% glycerol pH 7.3.  
Aliquoting is unnecessary for -20°C storage

For technical support and original validation data for this product please contact:

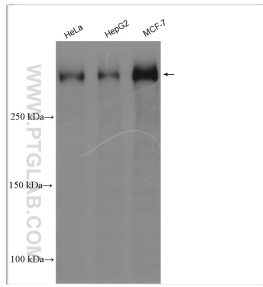
T: 4006900926

E: [Proteintech-CN@ptglab.com](mailto:Proteintech-CN@ptglab.com)

W: [ptgcn.com](http://ptgcn.com)

**This product is exclusively available under Proteintech Group brand and is not available to purchase from any other manufacturer.**

## Selected Validation Data



Various lysates were subjected to SDS PAGE followed by western blot with 29450-1-AP (BRCA2 antibody) at dilution of 1:4000 incubated at room temperature for 1.5 hours.