

For Research Use Only

Phospho-PDH E1 Alpha (Ser293) Polyclonal antibody



Catalog Number: 29580-1-AP

Basic Information

Catalog Number:

29580-1-AP

Size:

450 µg/ml

Source:

Rabbit

Isotype:

IgG

GenBank Accession Number:

BC002406

GeneID (NCBI):

5160

UNIPROT ID:

P08559

Full Name:

pyruvate dehydrogenase (lipoamide)
alpha 1

Calculated MW:

43 kDa

Observed MW:

40 kDa

Purification Method:

Antigen affinity purification

Recommended Dilutions:

WB 1:500-1:2000

Applications

Tested Applications:

WB, ELISA

Species Specificity:

Human

Positive Controls:

WB: HeLa cells, λ phosphatase treated HeLa cells

Background Information

PDHA1 (Pyruvate dehydrogenase E1 component subunit alpha, somatic form, mitochondrial) is also named as PHE1A. Multiple post-translational modifications (PTMs) of PDHA1 have been identified, such as acetylation, succinylation, and tyrosine phosphorylation. However, most of these PTMs ultimately affect PDHA1 activity through their influence on the phosphorylation of Ser293, Ser232, and Ser300 which are regulated by PDKs (pyruvate dehydrogenase kinases) and PDPs (pyruvate dehydrogenase phosphatases). (PMID: 34667275)

Storage

Storage:

Store at -20°C. Stable for one year after shipment.

Storage Buffer:

PBS with 0.02% sodium azide and 50% glycerol pH 7.3.

Aliquoting is unnecessary for -20°C storage

For technical support and original validation data for this product please contact:

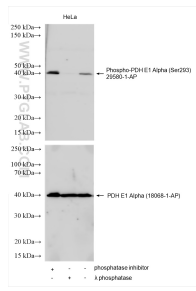
T: 4006900926

E: Proteintech-CN@ptglab.com

W: ptgcn.com

This product is exclusively available under Proteintech Group brand and is not available to purchase from any other manufacturer.

Selected Validation Data



Non-treated HeLa cells, phosphatase inhibitor treated HeLa cells and λ phosphatase treated HeLa cells were subjected to SDS PAGE followed by western blot with 29580-1-AP (Phospho-PDH E1 Alpha (Ser293) antibody) at dilution of 1:1000 incubated at room temperature for 1.5 hours. The membrane was stripped and re-blotted with PDH E1 Alpha (18068-1-AP) antibody as a loading control.