

For Research Use Only

# SENP2 Polyclonal antibody

Catalog Number: 29772-1-AP **1 Publications**



## Basic Information

<b>Catalog Number:</b> 29772-1-AP	<b>GenBank Accession Number:</b> NM_021627	<b>Purification Method:</b> Antigen affinity purification
<b>Size:</b> 400 µg/ml	<b>GeneID (NCBI):</b> 59343	<b>Recommended Dilutions:</b> WB 1:2000-1:10000 IHC 1:500-1:2000
<b>Source:</b> Rabbit	<b>UNIPROT ID:</b> Q9HC62	
<b>Isotype:</b> IgG	<b>Full Name:</b> SUMO1/sentrin/SMT3 specific peptidase 2	
<b>Immunogen Catalog Number:</b> AG30728	<b>Calculated MW:</b> 68 kDa	
	<b>Observed MW:</b> 60-68 kDa	

## Applications

<b>Tested Applications:</b> IHC, WB, ELISA	<b>Positive Controls:</b> WB : EC109 cells, MKN-45 cells, SGC-7901 cells IHC : human pancreas cancer tissue,
<b>Cited Applications:</b> WB	
<b>Species Specificity:</b> Human	
<b>Cited Species:</b> human, rat	

**Note-IHC: suggested antigen retrieval with TE buffer pH 9.0; (\*) Alternatively, antigen retrieval may be performed with citrate buffer pH 6.0**

## Background Information

SENP2 (Sentrin-specific protease 2), as a protease, catalyzes two essential functions in the SUMO pathway. The first is the hydrolysis of an alpha-linked peptide bond at the C-terminal end of the small ubiquitin-like modifier (SUMO) propeptides, SUMO1, SUMO2 and SUMO3 leading to the mature form of the proteins (PMID:15296745). The second is the deconjugation of SUMO1, SUMO2 and SUMO3 from targeted proteins, by cleaving an epsilon-linked peptide bond between the C-terminal glycine of the mature SUMO and the lysine epsilon-amino group of the target protein (PMID:20194620, PMID:21965678). It has 2 isoforms with the molecular weight of 66 and 68 kDa.

## Notable Publications

Author	Pubmed ID	Journal	Application
Xiangyu Chen	38615367	CNS Neurosci Ther	WB

## Storage

**Storage:**  
Store at -20°C. Stable for one year after shipment.  
**Storage Buffer:**  
PBS with 0.02% sodium azide and 50% glycerol pH 7.3.  
Aliquoting is unnecessary for -20°C storage

For technical support and original validation data for this product please contact:

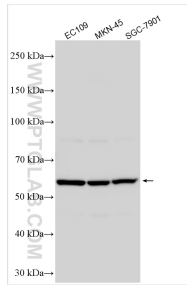
T: 4006900926

E: Proteintech-CN@ptglab.com

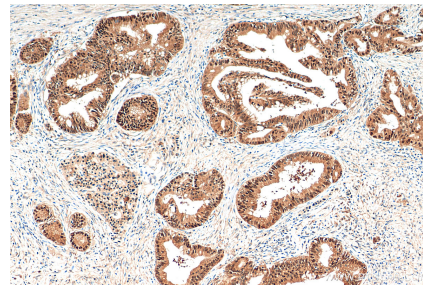
W: ptgcn.com

**This product is exclusively available under Proteintech Group brand and is not available to purchase from any other manufacturer.**

## Selected Validation Data



Various lysates were subjected to SDS PAGE followed by western blot with 29772-1-AP (SENP2 antibody) at dilution of 1:5000 incubated at room temperature for 1.5 hours.



Immunohistochemical analysis of paraffin-embedded human pancreas cancer tissue slide using 29772-1-AP (SENP2 antibody) at dilution of 1:1000 (under 10x lens). Heat mediated antigen retrieval with Tris-EDTA buffer (pH 9.0).