

For Research Use Only

# RGS12 Polyclonal antibody

Catalog Number: 29803-1-AP



## Basic Information

|   |  |  |
|---|--|--|
| <b>Catalog Number:</b><br>29803-1-AP        | <b>GenBank Accession Number:</b><br>NM_198229                          | <b>Purification Method:</b><br>Antigen affinity purification                               |
| <b>Size:</b><br>650 ug/ml                   | <b>GeneID (NCBI):</b><br>6002  | <b>Recommended Dilutions:</b><br>WB 1:1000-1:8000<br>IHC 1:250-1:1000<br>IF/ICC 1:50-1:500 |
| <b>Source:</b><br>Rabbit                    | <b>UNIPROT ID:</b><br>O14924   |  |
| <b>Isotype:</b><br>IgG                      | <b>Full Name:</b><br>regulator of G-protein signaling 12               |  |
| <b>Immunogen Catalog Number:</b><br>AG30731 | <b>Calculated MW:</b><br>156 kDa<br><b>Observed MW:</b><br>140-150 kDa |  |

## Applications

**Tested Applications:**  
WB, IHC, IF/ICC, ELISA

**Species Specificity:**  
human, mouse

**Note-IHC: suggested antigen retrieval with TE buffer pH 9.0; (\*) Alternatively, antigen retrieval may be performed with citrate buffer pH 6.0**

**Positive Controls:**

**WB :** HepG2 cells, A431 cells, SH-SY5Y cells, THP-1 cells, NIH/3T3 cells

**IHC :** rat cerebellum tissue,

**IF/ICC :** PC-3 cells,

## Background Information

Regulator of G-protein signaling 12 (RGS12) regulates G protein-coupled receptor signaling cascades. Inhibits signal transduction by increasing the GTPase activity of G protein alpha subunits, thereby driving them into their inactive GDP-bound form. This antibody can be detected as 140-150 kDa.

## Storage

**Storage:**

Store at -20°C. Stable for one year after shipment.

**Storage Buffer:**

PBS with 0.02% sodium azide and 50% glycerol pH 7.3.

Aliquoting is unnecessary for -20°C storage

For technical support and original validation data for this product please contact:

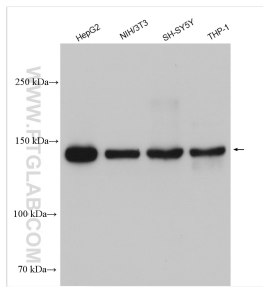
T: 4006900926

E: [Proteintech-CN@ptglab.com](mailto:Proteintech-CN@ptglab.com)

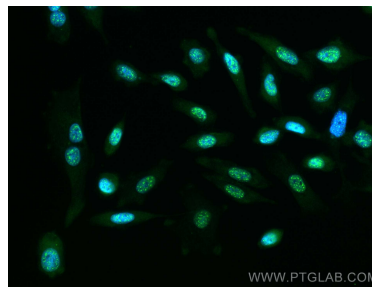
W: [ptgcn.com](http://ptgcn.com)

**This product is exclusively available under Proteintech Group brand and is not available to purchase from any other manufacturer.**

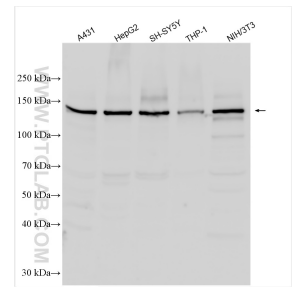
## Selected Validation Data



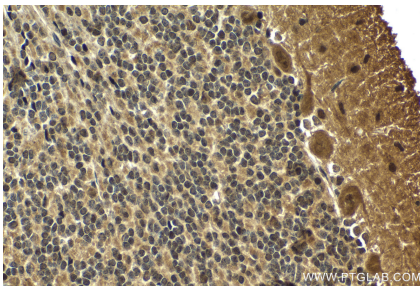
Various lysates were subjected to SDS PAGE followed by western blot with 29803-1-AP (RGS12 antibody) at dilution of 1:4000 incubated at room temperature for 1.5 hours.



Immunofluorescent analysis of (-20°C Methanol) fixed PC-3 cells using RGS12 antibody (29803-1-AP) at dilution of 1:200 and CoraLite® 488-Conjugated AffiniPure Goat Anti-Rabbit IgG(H+L).



Various lysates were subjected to SDS PAGE followed by western blot with 29803-1-AP (RGS12 antibody) at dilution of 1:3000 incubated at room temperature for 1.5 hours.



Immunohistochemical analysis of paraffin-embedded rat cerebellum tissue slide using 29803-1-AP (RGS12 antibody) at dilution of 1:500 (under 40x lens). Heat mediated antigen retrieval with Tris-EDTA buffer (pH 9.0).