

For Research Use Only

RAB3IP/Rabin8 Polyclonal antibody

Catalog Number:29818-1-AP



Basic Information

Catalog Number: 29818-1-AP	GenBank Accession Number: BC015548	Purification Method: Antigen affinity purification
Size: 500 ug/ml	GeneID (NCBI): 117177	Recommended Dilutions: WB 1:500-1:2000 IP 0.5-4.0 ug for 1.0-3.0 mg of total protein lysate
Source: Rabbit	UNIPROT ID: Q96QF0	
Isotype: IgG	Full Name: RAB3A interacting protein (rabin3)	
Immunogen Catalog Number: AG31291	Calculated MW: 476 aa, 53 kDa	
	Observed MW: 51 kDa	

Applications

Tested Applications: WB, IP, ELISA	Positive Controls: WB : HEK-293 cells, Jurkat cells
Species Specificity: human	IP : Jurkat cells,

Background Information

RAB3IP, also known as Rabin8, is a deduced 476-amino acid protein containing a central coiled-coil domain, a bipartite nuclear localization signal, and a C-terminal endoplasmic reticulum retention motif. Rabin8 has several sites for N-glycosylation and phosphorylation. Rabin8 plays important roles in various cellular processes, including ciliogenesis. The GEF activity of Rabin8 towards Rab8 is essential for ciliogenesis and cyst apical membrane transport, but not for exocytosis of discoidal/fusiform-shaped vesicles.

Storage

Storage:
Store at -20°C. Stable for one year after shipment.
Storage Buffer:
PBS with 0.02% sodium azide and 50% glycerol pH 7.3.
Aliquoting is unnecessary for -20°C storage

For technical support and original validation data for this product please contact:

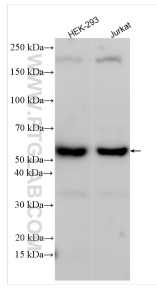
T: 4006900926

E: Proteintech-CN@ptglab.com

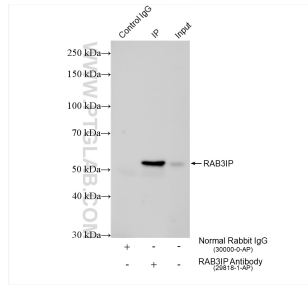
W: ptgcn.com

This product is exclusively available under Proteintech Group brand and is not available to purchase from any other manufacturer.

Selected Validation Data



Various lysates were subjected to SDS PAGE followed by western blot with 29818-1-AP (RAB3IP/Rabin8 antibody) at dilution of 1:1000 incubated at room temperature for 1.5 hours.



IP result of anti-RAB3IP/Rabin8 (IP:29818-1-AP, 4ug; Detection:29818-1-AP 1:4000) with Jurkat cells lysate 1320 ug.