

For Research Use Only

# AP2A1 Polyclonal antibody

Catalog Number: 29887-1-AP



## Basic Information

<b>Catalog Number:</b> 29887-1-AP	<b>GenBank Accession Number:</b> NM_014203	<b>Purification Method:</b> Antigen affinity purification
<b>Size:</b> 700 µg/ml	<b>GeneID (NCBI):</b> 160	<b>Recommended Dilutions:</b> WB 1:2000-1:10000 IHC 1:250-1:1000 IF/ICC 1:200-1:800
<b>Source:</b> Rabbit	<b>UNIPROT ID:</b> O95782	
<b>Isotype:</b> IgG	<b>Full Name:</b> adaptor-related protein complex 2, alpha 1 subunit	
<b>Immunogen Catalog Number:</b> AG31809	<b>Calculated MW:</b> 108KD	
	<b>Observed MW:</b> 100-108 kDa	

## Applications

**Tested Applications:**  
IF/ICC, IHC, WB, ELISA

**Species Specificity:**  
Human, mouse

**Note-IHC: suggested antigen retrieval with TE buffer pH 9.0; (\*) Alternatively, antigen retrieval may be performed with citrate buffer pH 6.0**

**Positive Controls:**

**WB:** HEK-293 cells, SH-SY5Y cells, mouse heart tissue

**IHC:** human ovary tumor tissue,

**IF/ICC:** SH-SY5Y cells, HeLa cells

## Background Information

AP2A1 encodes adaptor protein complex 2 (AP-2) subunit alpha-1, which is a 100 kDa coated vesicle protein. Adaptor protein (AP) complexes are cytosolic heterotetramers that mediate the sorting of membrane proteins in the secretory and endocytic pathways. AP complexes are involved in the formation of clathrin-coated vesicles (CCVs) by recruiting the scaffold protein, clathrin. AP complexes also play a pivotal role in the cargo selection by recognizing the sorting signals within the cytoplasmic tail of integral membrane proteins. AP-2 is involved in clathrin-dependent endocytosis.

## Storage

**Storage:**  
Store at -20°C.  
**Storage Buffer:**  
PBS with 0.02% sodium azide and 50% glycerol pH 7.3.  
Aliquoting is unnecessary for -20°C storage

For technical support and original validation data for this product please contact:

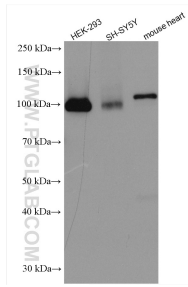
T: 4006900926

E: [Proteintech-CN@ptglab.com](mailto:Proteintech-CN@ptglab.com)

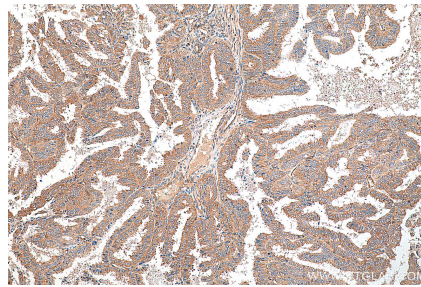
W: [ptgcn.com](http://ptgcn.com)

**This product is exclusively available under Proteintech Group brand and is not available to purchase from any other manufacturer.**

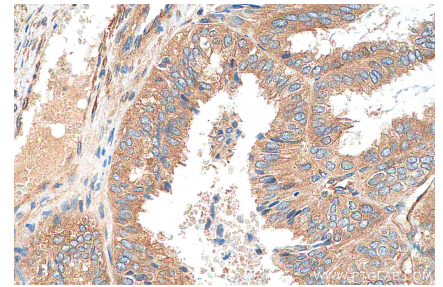
## Selected Validation Data



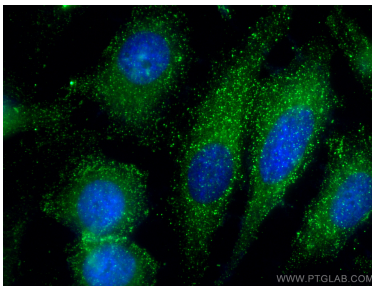
Various lysates were subjected to SDS PAGE followed by western blot with 29887-1-AP (AP2A1 antibody) at dilution of 1:5000 incubated at room temperature for 1.5 hours.



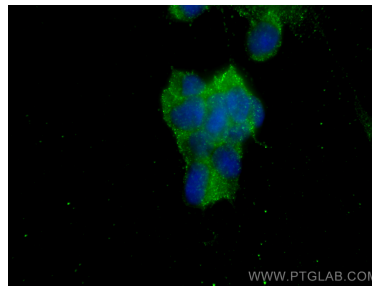
Immunohistochemical analysis of paraffin-embedded human ovary tumor tissue slide using 29887-1-AP (AP2A1 antibody) at dilution of 1:500 (under 10x lens). Heat mediated antigen retrieval with Tris-EDTA buffer (pH 9.0).



Immunohistochemical analysis of paraffin-embedded human ovary tumor tissue slide using 29887-1-AP (AP2A1 antibody) at dilution of 1:500 (under 40x lens). Heat mediated antigen retrieval with Tris-EDTA buffer (pH 9.0).



Immunofluorescent analysis of (-20°C Methanol) fixed HeLa cells using AP2A1 antibody (29887-1-AP) at dilution of 1:400 and CoraLite@488-Conjugated AffiniPure Goat Anti-Rabbit IgG(H+L).



Immunofluorescent analysis of (-20°C Ethanol) fixed SH-SY5Y cells using AP2A1 antibody (29887-1-AP) at dilution of 1:400 and CoraLite@488-Conjugated AffiniPure Goat Anti-Rabbit IgG(H+L).