

For Research Use Only

SPATS2L Polyclonal antibody

Catalog Number: 29930-1-AP



Basic Information

Catalog Number: 29930-1-AP	GenBank Accession Number: BC018736	Purification Method: Antigen affinity purification
Size: 600 µg/ml	GeneID (NCBI): 26010	Recommended Dilutions: WB 1:1000-1:4000 IHC 1:50-1:500 IF 1:50-1:500
Source: Rabbit	UNIPROT ID: Q9NUQ6	
Isotype: IgG	Full Name: viral DNA polymerase-transactivated protein 6	
Immunogen Catalog Number: AG31157	Calculated MW: 488 aa, 54 kDa	
	Observed MW: 54-65 kDa	

Applications

Tested Applications:
IF/ICC, IHC, WB, ELISA

Species Specificity:
Human, mouse, rat

Note-IHC: suggested antigen retrieval with TE buffer pH 9.0; (*) Alternatively, antigen retrieval may be performed with citrate buffer pH 6.0

Positive Controls:

WB: A549 cells, HepG2 cells, mouse kidney tissue, rat kidney tissue

IHC: human lung cancer tissue, human placenta tissue

IF: HepG2 cells,

Background Information

SPATS2L encodes spermatogenesis associated and serine-rich 2-like protein, also named DNAPT6 (DNA polymerase transactivated protein 6) in human (PMID:11230166). SPATS2L acts as an important regulator of β 2-adrenergic receptor down-regulation (PubMed: 25562107). MiR-1269a down-regulates the expression of SPATS2L and LRP6, thereby inhibiting the proliferation of liver cancer cells (PMID: 28081866, PMID:35252180). SPATS2L has several isoforms by alternative splicing.

Storage

Storage:
Store at -20°C. Stable for one year after shipment.
Storage Buffer:
PBS with 0.02% sodium azide and 50% glycerol pH 7.3.
Aliquoting is unnecessary for -20°C storage

For technical support and original validation data for this product please contact:

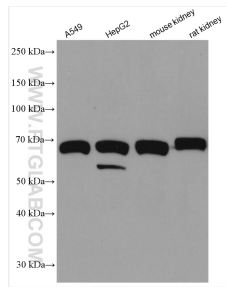
T: 4006900926

E: Proteintech-CN@ptglab.com

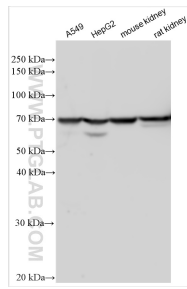
W: ptgcn.com

This product is exclusively available under Proteintech Group brand and is not available to purchase from any other manufacturer.

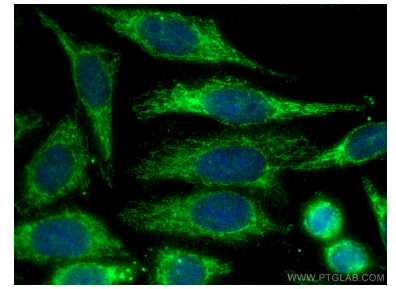
Selected Validation Data



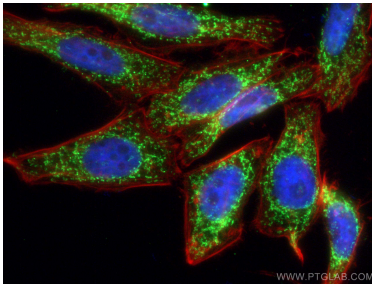
Various lysates were subjected to SDS PAGE followed by western blot with 29930-1-AP (SPATS2L antibody) at dilution of 1:2000 incubated at room temperature for 1.5 hours.



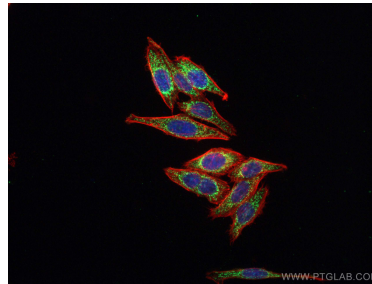
Various lysates were subjected to SDS PAGE followed by western blot with 29930-1-AP (SPATS2L antibody) at dilution of 1:15000 incubated at room temperature for 1.5 hours.



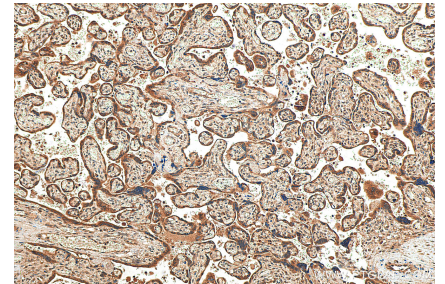
Immunofluorescent analysis of (-20°C Ethanol) fixed HepG2 cells using SPATS2L antibody (29930-1-AP) at dilution of 1:200 and CoraLite@488-Conjugated AffiniPure Goat Anti-Rabbit IgG(H+L).



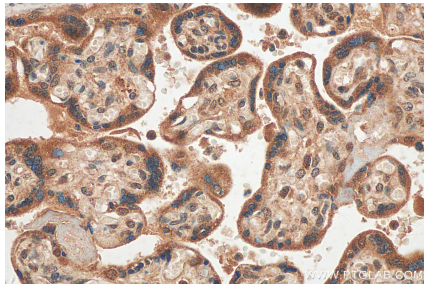
Immunofluorescent analysis of (4% PFA) fixed HepG2 cells using SPATS2L antibody (29930-1-AP) at dilution of 1:200 and CoraLite@488-Conjugated AffiniPure Goat Anti-Rabbit IgG(H+L), CL594-Phalloidin (red).



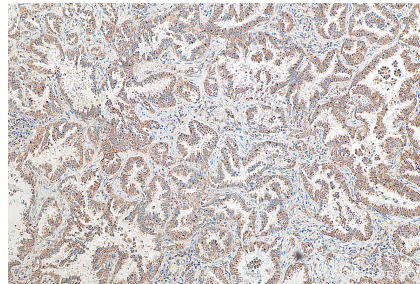
Immunofluorescent analysis of (4% PFA) fixed HepG2 cells using SPATS2L antibody (29930-1-AP) at dilution of 1:200 and CoraLite@488-Conjugated AffiniPure Goat Anti-Rabbit IgG(H+L), CL594-Phalloidin (red).



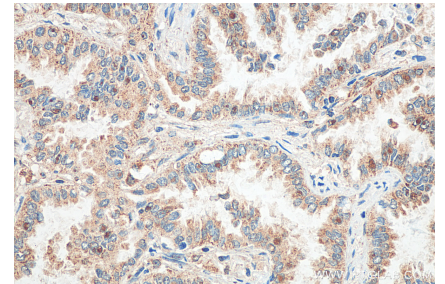
Immunohistochemical analysis of paraffin-embedded human placenta tissue slide using 29930-1-AP (SPATS2L antibody) at dilution of 1:200 (under 10x lens). Heat mediated antigen retrieval with Tris-EDTA buffer (pH 9.0).



Immunohistochemical analysis of paraffin-embedded human placenta tissue slide using 29930-1-AP (SPATS2L antibody) at dilution of 1:200 (under 40x lens). Heat mediated antigen retrieval with Tris-EDTA buffer (pH 9.0).



Immunohistochemical analysis of paraffin-embedded human lung cancer tissue slide using 29930-1-AP (SPATS2L antibody) at dilution of 1:200 (under 10x lens). Heat mediated antigen retrieval with Tris-EDTA buffer (pH 9.0).



Immunohistochemical analysis of paraffin-embedded human lung cancer tissue slide using 29930-1-AP (SPATS2L antibody) at dilution of 1:200 (under 40x lens). Heat mediated antigen retrieval with Tris-EDTA buffer (pH 9.0).