

For Research Use Only

MBD1 Polyclonal antibody

Catalog Number: 29998-1-AP



Basic Information

Catalog Number: 29998-1-AP	GenBank Accession Number: NM_015846	Purification Method: Antigen affinity purification
Size: 350 µg/ml	GeneID (NCBI): 4152	Recommended Dilutions: WB 1:1000-1:8000 IF/ICC 1:400-1:1600
Source: Rabbit	UNIPROT ID: Q9UIS9	
Isotype: IgG	Full Name: methyl-CpG binding domain protein 1	
Immunogen Catalog Number: AG31424	Calculated MW: 67KD	
	Observed MW: 70-80 kDa	

Applications

Tested Applications: WB, IF/ICC, ELISA	Positive Controls: WB : HeLa cells, Jurkat cells
Species Specificity: human	IF/ICC : HeLa cells, MCF-7 cells

Background Information

MBD1, also known as RFT, PCM1, CXXC3, is a member of a family of nuclear proteins related by the presence of a methyl-CpG binding domain (MBD). MBD1 is a transcriptional repressor that binds CpG islands in promoters where the DNA is methylated at position 5 of cytosine within CpG dinucleotides. MBD1 acts as a transcriptional repressor and plays a role in gene silencing by recruiting AFT7IP, which in turn recruits factors such as the histone methyltransferase SETDB1. Five transcript variants of the MBD1 are generated by alternative splicing resulting in protein isoforms that contain one MBD domain, two to three cysteine-rich (CXXC) domains, and some differences in the COOH terminus. Isoform 1 and isoform 2 can repress transcription from unmethylated promoters (PMID: 12665582, 14610093, 16757475).

Storage

Storage:
Store at -20°C. Stable for one year after shipment.
Storage Buffer:
PBS with 0.02% sodium azide and 50% glycerol pH 7.3.
Aliquoting is unnecessary for -20°C storage

For technical support and original validation data for this product please contact:

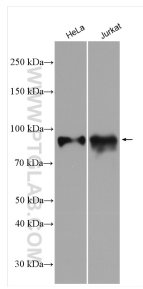
T: 4006900926

E: Proteintech-CN@ptglab.com

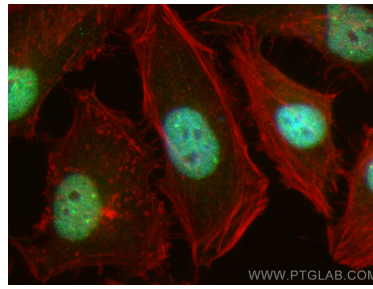
W: ptgcn.com

This product is exclusively available under Proteintech Group brand and is not available to purchase from any other manufacturer.

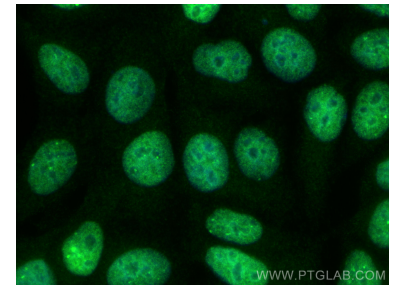
Selected Validation Data



Various lysates were subjected to SDS PAGE followed by western blot with 29998-1-AP (MBD1 antibody) at dilution of 1:4000 incubated at room temperature for 1.5 hours.



Immunofluorescent analysis of (4% PFA) fixed HeLa cells using MBD1 antibody (29998-1-AP) at dilution of 1:800 and Multi-rAb CoraLite® Plus 488-Goat Anti-Rabbit Recombinant Secondary Antibody (H+L) (RGAR002), CL594-phalloidin (red).



Immunofluorescent analysis of (4% PFA) fixed MCF-7 cells using MBD1 antibody (29998-1-AP) at dilution of 1:800 and Multi-rAb CoraLite® Plus 488-Goat Anti-Rabbit Recombinant Secondary Antibody (H+L) (RGAR002).