

For Research Use Only

ITGBL1 Polyclonal antibody

Catalog Number: 30010-1-AP



Basic Information

Catalog Number: 30010-1-AP	GenBank Accession Number: BC036788	Purification Method: Antigen affinity purification
Size: 550 µg/ml	GeneID (NCBI): 9358	Recommended Dilutions: WB 1:500-1:2000
Source: Rabbit	UNIPROT ID: O95965	
Isotype: IgG	Full Name: integrin, beta-like 1 (with EGF-like repeat domains)	
Immunogen Catalog Number: AG31989	Calculated MW: 494 aa, 54 kDa	
	Observed MW: 54 kDa	

Applications

Tested Applications: WB, ELISA	Positive Controls: WB : HeLa cells, SKOV-3 cells
Species Specificity: Human	

Background Information

Integrin beta-like protein 1 (ITGBL1), also named as TIED or OSCP, is a secreted protein that contains ten tandem EGF-like repeats strikingly similar to those found in the cysteine-rich "stalk-like" structure of integrin beta subunits (PMID: 10051402). ITGBL1 participates in the regulation of fibrogenesis via interactions with transforming growth factor beta 1 (PMID: 28262670). ITGBL1 is also involved in the development and metastasis of many tumors (PMID: 32211321; 29772438; 26060017; 31190876).

Storage

Storage:
Store at -20°C. Stable for one year after shipment.
Storage Buffer:
PBS with 0.02% sodium azide and 50% glycerol pH 7.3.
Aliquoting is unnecessary for -20°C storage

For technical support and original validation data for this product please contact:

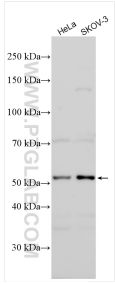
T: 4006900926

E: Proteintech-CN@ptglab.com

W: ptgcn.com

This product is exclusively available under Proteintech Group brand and is not available to purchase from any other manufacturer.

Selected Validation Data



Various lysates were subjected to SDS PAGE followed by western blot with 30010-1-AP (ITGBL1 antibody) at dilution of 1:1000 incubated at room temperature for 1.5 hours.