

For Research Use Only

CNDP2 Polyclonal antibody

Catalog Number: 30025-1-AP



Basic Information

Catalog Number:

30025-1-AP

Size:

300 µg/ml

Source:

Rabbit

Isotype:

IgG

Immunogen Catalog Number:

AG32312

GenBank Accession Number:

BC001375

GeneID (NCBI):

55748

UNIPROT ID:

Q96KP4

Full Name:

CNDP dipeptidase 2
(metallopeptidase M20 family)

Calculated MW:

53 kDa

Observed MW:

44-53 kDa

Purification Method:

Antigen affinity purification

Recommended Dilutions:

WB 1:2000-1:10000

Applications

Tested Applications:

WB, ELISA

Species Specificity:

Human

Positive Controls:

WB : HEK-293T cells, HL-60 cells, Jurkat cells, PC-3 cells, U-251 cells, U-937 cells

Background Information

Carnosine dipeptidase II (CNDP2) catalyzes the peptide bond hydrolysis in dipeptides, displaying a non-redundant activity toward threonyl dipeptides. It has high dipeptidase activity toward cysteinyl glycine, an intermediate metabolite in glutathione metabolism (PubMed:19346245, PubMed:12473676). Metabolizes N-lactoyl-amino acids, both through hydrolysis to form lactic acid and amino acids, as well as through their formation by reverse proteolysis (PubMed:25964343). CNDP2 has 2 isoforms with a molecular weight of 53 and 44 kDa. The isoform 1 is ubiquitously expressed with higher levels in the kidney and liver (at protein level) and expressed in peripheral blood leukocytes (PubMed:12473676). It is also expressed in gastric mucosa and down-regulated in gastric cancer mucosal tissues (at the protein level) (PubMed:24395568). Isoform 2 is broadly expressed in fetal tissues and expressed in the adult liver and placenta. (PMID: 17121880).

Storage

Storage:

Store at -20°C. Stable for one year after shipment.

Storage Buffer:

PBS with 0.02% sodium azide and 50% glycerol pH 7.3.

Aliquoting is unnecessary for -20°C storage

For technical support and original validation data for this product please contact:

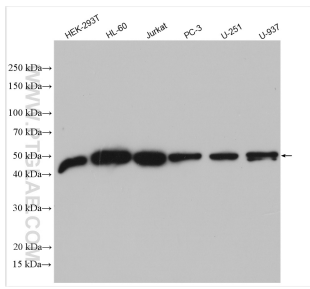
T: 4006900926

E: Proteintech-CN@ptglab.com

W: ptgcn.com

This product is exclusively available under Proteintech Group brand and is not available to purchase from any other manufacturer.

Selected Validation Data



Various lysates were subjected to SDS PAGE followed by western blot with 30025-1-AP (CNDP2 antibody) at dilution of 1:5000 incubated at room temperature for 1.5 hours.