

For Research Use Only

SCNN1G Polyclonal antibody

Catalog Number:30037-1-AP



Basic Information

Catalog Number: 30037-1-AP	GenBank Accession Number: BC059391	Purification Method: Antigen affinity purification
Size: 550 ug/ml	GeneID (NCBI): 6340	Recommended Dilutions: WB 1:500-1:2000
Source: Rabbit	UNIPROT ID: P51170	
Isotype: IgG	Full Name: sodium channel, nonvoltage-gated 1, gamma	
Immunogen Catalog Number: AG32176	Calculated MW: 74 kDa	
	Observed MW: 74 kDa	

Applications

Tested Applications: WB, ELISA	Positive Controls: WB : A431 cells, COLO 320 cells, PC-3 cells, pig kidney tissue
Species Specificity: human, pig	

Background Information

SCNN1G (sodium channel, non-voltage-gated 1, gamma), also known as ENaC gamma (epithelial Na⁺) channel subunit gamma) or amiloride-sensitive sodium channel subunit gamma, is the gamma subunit of the epithelial Na⁺ channel (ENaC). ENaC is expressed in the apical membrane of salt-absorbing epithelia of the kidney, distal colon, and lung. ENaC is a non-voltage gated, constitutively active channel highly selective for sodium. It has an essential role in salt and fluid homeostasis across epithelial tissues. Mutations in the gene of SCNN1G have been associated with Liddle syndrome. Native SCNN1G has a calculated molecular weight of 74 kDa and may undergo post-transcriptional modifications, including glycosylation and proteolytic cleavage (PMID: 12871941; 18086683).

Storage

Storage:
Store at -20°C. Stable for one year after shipment.
Storage Buffer:
PBS with 0.02% sodium azide and 50% glycerol pH 7.3.
Aliquoting is unnecessary for -20°C storage

For technical support and original validation data for this product please contact:

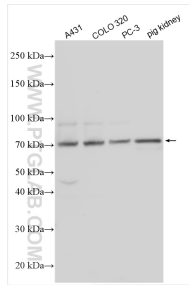
T: 4006900926

E: Proteintech-CN@ptglab.com

W: ptgcn.com

This product is exclusively available under Proteintech Group brand and is not available to purchase from any other manufacturer.

Selected Validation Data



Various lysates were subjected to SDS PAGE followed by western blot with 30037-1-AP (SCNN1G antibody) at dilution of 1:1000 incubated at room temperature for 1.5 hours.