

For Research Use Only

CXorf21 Polyclonal antibody

Catalog Number: 30244-1-AP



Basic Information

Catalog Number: 30244-1-AP	GenBank Accession Number: BC020611	Purification Method: Antigen affinity purification
Size: 400 µg/ml	GeneID (NCBI): 80231	Recommended Dilutions: WB 1:500-1:2000 IF/ICC 1:50-1:500
Source: Rabbit	UNIPROT ID: Q9HAI6	
Isotype: IgG	Full Name: chromosome X open reading frame 21	
Immunogen Catalog Number: AG32773	Observed MW: 34 kDa	

Applications

Tested Applications: IF/ICC, WB, ELISA	Positive Controls: WB: THP-1 cells, IF/ICC: U-251 cells, U2OS cells
Species Specificity: Human	

Background Information

CXorf21 (Chromosome X open reading frame 21) is also named as TASL and TLR adapter interacting with SLC15A4 on the lysosome. CXorf21 is an innate immune adapter that mediates the recruitment and activation of IRF5 downstream of endolysosomal toll-like receptors TLR7, TLR8 and TLR9 (PMID:32433612). CXorf21 plays a role in the regulation of endolysosomal pH in immune cells such as B-cells, dendritic cells and monocytes (PMID: 31001245). CXorf21 is a mediator of the X-chromosome gene dose-dependent increased risk of SLE in females (PMID: 31695690).

Storage

Storage:
Store at -20°C. Stable for one year after shipment.
Storage Buffer:
PBS with 0.02% sodium azide and 50% glycerol pH 7.3.
Aliquoting is unnecessary for -20°C storage

For technical support and original validation data for this product please contact:

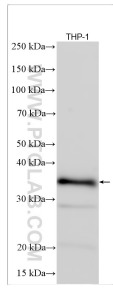
T: 4006900926

E: Proteintech-CN@ptglab.com

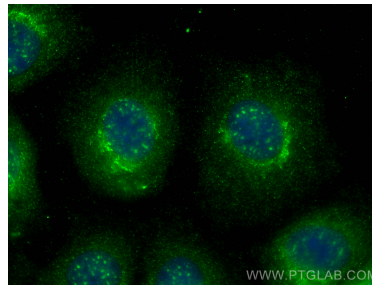
W: ptgcn.com

This product is exclusively available under Proteintech Group brand and is not available to purchase from any other manufacturer.

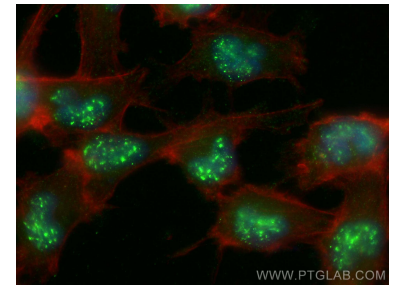
Selected Validation Data



THP-1 cells were subjected to SDS PAGE followed by western blot with 30244-1-AP (CXorf21 antibody) at dilution of 1:1000 incubated at room temperature for 1.5 hours.



Immunofluorescent analysis of (-20°C Methanol) fixed U2OS cells using CXorf21 antibody (30244-1-AP) at dilution of 1:400 and CoraLite® 488-Conjugated AffiniPure Goat Anti-Rabbit IgG(H+L).



Immunofluorescent analysis of (-20°C Ethanol) fixed U-251 cells using CXorf21 antibody (30244-1-AP) at dilution of 1:200 and CoraLite® 488-Conjugated AffiniPure Goat Anti-Rabbit IgG(H+L), CL594-phalloidin (red).