

For Research Use Only

DCBLD2 Polyclonal antibody

Catalog Number:30245-1-AP



Basic Information

Catalog Number: 30245-1-AP	GenBank Accession Number: BC029658	Purification Method: Antigen affinity purification
Size: 500 ug/ml	GeneID (NCBI): 131566	Recommended Dilutions: WB 1:1000-1:6000 IHC 1:300-1:1200
Source: Rabbit	UNIPROT ID: Q96PD2	
Isotype: IgG	Full Name: discoidin, CUB and LCCL domain containing 2	
Immunogen Catalog Number: AG32823	Calculated MW: 775 aa, 89 kDa	
	Observed MW: 120 kDa	

Applications

Tested Applications: WB, IHC, ELISA	Positive Controls: WB : A549 cells, U2OS cells IHC : human stomach cancer tissue,
Species Specificity: human	

Note-IHC: suggested antigen retrieval with TE buffer pH 9.0; (*) Alternatively, antigen retrieval may be performed with citrate buffer pH 6.0

Background Information

DCBLD2, also known as ESDN or CLCP1, was first identified from human coronary arterial cells by a signal sequence trap method. DCBLD2 regulates proliferation, migration, and invasion in various tumors, including glioma, hypopharyngeal squamous cell carcinoma, and myxofibrosarcoma. The human DCBLD2 protein has a predicted molecular mass of 80 kDa based on its amino acid sequence, although it regularly displays an effective molecular mass of 130 kDa via SDS-PAGE (PMID: 30902898).

Storage

Storage:
Store at -20°C. Stable for one year after shipment.
Storage Buffer:
PBS with 0.02% sodium azide and 50% glycerol pH 7.3.
Aliquoting is unnecessary for -20°C storage

For technical support and original validation data for this product please contact:

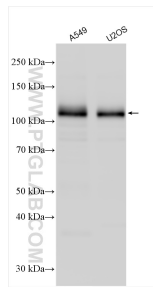
T: 4006900926

E: Proteintech-CN@ptglab.com

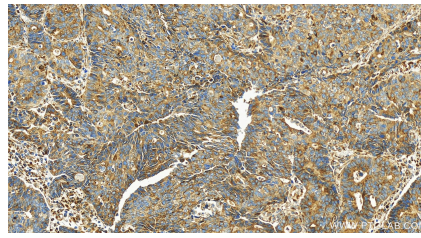
W: ptgcn.com

This product is exclusively available under Proteintech Group brand and is not available to purchase from any other manufacturer.

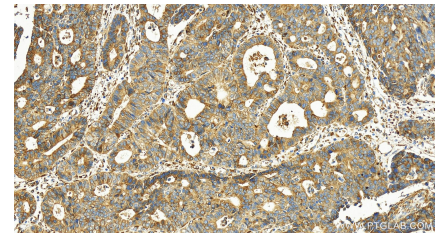
Selected Validation Data



Various lysates were subjected to SDS PAGE followed by western blot with 30245-1-AP (DCBLD2 antibody) at dilution of 1:3000 incubated at room temperature for 1.5 hours.



Immunohistochemical analysis of paraffin-embedded human stomach cancer tissue slide using 30245-1-AP (DCBLD2 antibody) at dilution of 1:600 (under 20x lens). Heat mediated antigen retrieval with Tris-EDTA buffer (pH 9.0).



Immunohistochemical analysis of paraffin-embedded human stomach cancer tissue slide using 30245-1-AP (DCBLD2 antibody) at dilution of 1:600 (under 20x lens). Heat mediated antigen retrieval with Tris-EDTA buffer (pH 9.0).