

Selenoprotein P Polyclonal antibody

Catalog Number: 30249-1-AP

Basic Information

Catalog Number: 30249-1-AP	GenBank Accession Number: NM_001085486.2	Purification Method: Antigen affinity purification
Size: 600 µg/ml	GeneID (NCBI): 6414	Recommended Dilutions: WB 1:5000-1:50000 IHC 1:50-1:500 IF/ICC 1:200-1:800
Source: Rabbit	UNIPROT ID: P49908	
Isotype: IgG	Full Name: selenoprotein P, plasma, 1	
Immunogen Catalog Number: AG32952	Calculated MW: 43 kDa Observed MW: 45-50 kDa	

Applications

Tested Applications:
IF/ICC, IHC, WB, ELISA

Species Specificity:
Human

Note-IHC: suggested antigen retrieval with TE buffer pH 9.0; (*) Alternatively, antigen retrieval may be performed with citrate buffer pH 6.0

Positive Controls:

WB : human plasma,
IHC : human liver tissue,
IF/ICC : HepG2 cells,

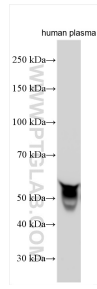
Background Information

Selenoprotein P, also known as SEPP1, is expressed in the liver and heart and secreted into the plasma (PMID: 8421687). Selenoprotein P is implicated as an extracellular antioxidant involved in the transport of selenium to extra-hepatic tissues via apolipoprotein E receptor-2 (apoER2) and provides selenium to tissues such as brain and testis. In humans, it exists in plasma as two isoforms of approximately 50 and 60 kDa (PMID:19453253). Selenoprotein P is a glycosylated protein and deglycosylation of SEPP1 results in 45 kDa and 35 kDa isoforms (PMID: 25298198).

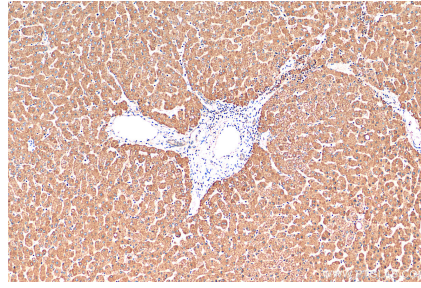
Storage

Storage:
Store at -20°C. Stable for one year after shipment.
Storage Buffer:
PBS with 0.02% sodium azide and 50% glycerol pH 7.3.
Aliquoting is unnecessary for -20°C storage

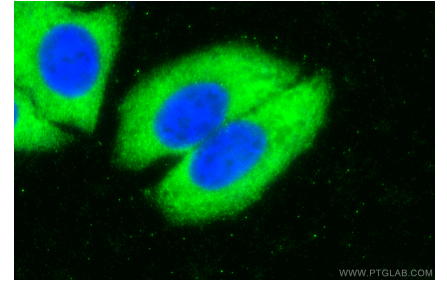
Selected Validation Data



human plasma were subjected to SDS PAGE followed by western blot with 30249-1-AP (Selenoprotein P antibody) at dilution of 1:10000 incubated at room temperature for 1.5 hours.



Immunohistochemical analysis of paraffin-embedded human liver tissue slide using 30249-1-AP (Selenoprotein P antibody) at dilution of 1:200 (under 10x lens). Heat mediated antigen retrieval with Tris-EDTA buffer (pH 9.0).



Immunofluorescent analysis of (-20°C Ethanol) fixed HepG2 cells using Selenoprotein P antibody (30249-1-AP) at dilution of 1:400 and CoraLite®488-Conjugated AffiniPure Goat Anti-Rabbit IgG(H+L).