

For Research Use Only

BLM Polyclonal antibody

Catalog Number: 30254-1-AP **1 Publications**



Basic Information

Catalog Number:

30254-1-AP

Size:

550 µg/ml

Source:

Rabbit

Isotype:

IgG

Immunogen Catalog Number:

AG32996

GenBank Accession Number:

GeneID (NCBI):

641

UNIPROT ID:

P54132

Full Name:

Bloom syndrome, RecQ helicase-like

Calculated MW:

159 kDa

Observed MW:

150-159 kDa

Purification Method:

Antigen affinity purification

Recommended Dilutions:

WB 1:1000-1:4000

Applications

Tested Applications:

WB, ELISA

Cited Applications:

WB

Species Specificity:

Human, mouse

Cited Species:

human

Positive Controls:

WB : NIH/3T3 cells, HEK-293T cells, HeLa cells, Jurkat cells, K-562 cells

Background Information

BLM participates in DNA replication and repair, it is involved in 5'-end resection of DNA during double-strand break (DSB) repair. BLM can also be recruited by the KHD3L-OOEP scaffold to DNA replication forks where it is retained by TRIM25 ubiquitination, it thereby promotes the restart of stalled replication forks.

Notable Publications

Author	Pubmed ID	Journal	Application
Xinyu Cui	38869071	Nucleic Acids Res	WB

Storage

Storage:

Store at -20°C. Stable for one year after shipment.

Storage Buffer:

PBS with 0.02% sodium azide and 50% glycerol pH 7.3.

Aliquoting is unnecessary for -20°C storage

For technical support and original validation data for this product please contact:

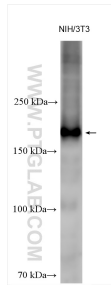
T: 4006900926

E: Proteintech-CN@ptglab.com

W: ptgcn.com

This product is exclusively available under Proteintech Group brand and is not available to purchase from any other manufacturer.

Selected Validation Data



Various lysates were subjected to SDS PAGE followed by western blot with 30254-1-AP (BLM antibody) at dilution of 1:2000 incubated at room temperature for 1.5 hours.



Various lysates were subjected to SDS PAGE followed by western blot with 30254-1-AP (BLM antibody) at dilution of 1:2000 incubated at room temperature for 1.5 hours.