

For Research Use Only

# IL-1 Beta Polyclonal antibody

Catalog Number:30342-1-AP



## Basic Information

Catalog Number:

30342-1-AP

Size:

350 ug/ml

Source:

Rabbit

Isotype:

IgG

GenBank Accession Number:

BC008678

GeneID (NCBI):

3553

ENSEMBL Gene ID:

ENSG00000125538

UNIPROT ID:

P01584

Full Name:

interleukin 1, beta

Calculated MW:

269 aa, 31 kDa

Observed MW:

30-35 kDa

Purification Method:

Antigen affinity purification

Recommended Dilutions:

WB 1:1000-1:4000

## Applications

Tested Applications:

WB, ELISA

Species Specificity:

human

Positive Controls:

WB : LPS and Protein transport inhibitor treated THP-1 cells,

## Background Information

Interleukin-1 is a pro-inflammatory cytokine with multiple biological effects. The IL-1 gene family encodes three proteins: IL-1 $\alpha$ , IL-1 $\beta$  and their naturally occurring inhibitor IL-1RN. IL-1 Beta(IL-1 $\beta$ ), mainly produced by blood monocytes and tissue macrophages, has been implicated in mediating both acute and chronic inflammation. IL-1 $\beta$  is known to be involved in a variety of cellular activities, including cell proliferation, differentiation and apoptosis. IL-1 $\beta$  is emerging as a key mediator of carcinogenesis that characterizes host-environment interactions. Human IL-1 $\beta$  is synthesized as a 31 kDa precursor. To gain activity, the precursor must be cleaved by caspase-1 between Asp116 and Ala117 to yield a 17 kDa mature form.

## Storage

Storage:

Store at -20°C. Stable for one year after shipment.

Storage Buffer:

PBS with 0.02% sodium azide and 50% glycerol pH 7.3.

Aliquoting is unnecessary for -20°C storage

For technical support and original validation data for this product please contact:

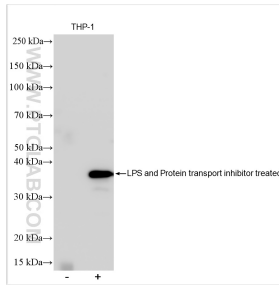
T: 4006900926

E: Proteintech-CN@ptglab.com

W: ptgcn.com

This product is exclusively available under Proteintech Group brand and is not available to purchase from any other manufacturer.

## Selected Validation Data



LPS and Protein transport inhibitor treated THP-1 cells were subjected to SDS PAGE followed by western blot with 30342-1-AP (IL-1 Beta antibody) at dilution of 1:2000 incubated at room temperature for 1.5 hours.