

For Research Use Only

# CEP295 Polyclonal antibody

Catalog Number: 30446-1-AP



## Basic Information

Catalog Number: 30446-1-AP	GenBank Accession Number: NM_033395.1	Purification Method: Antigen affinity purification
Size: 400 µg/ml	GeneID (NCBI): 85459	Recommended Dilutions: IHC 1:50-1:500 IF/ICC 1:50-1:500
Source: Rabbit	UNIPROT ID: Q9C0D2	
Isotype: IgG	Full Name: KIAA1731	
Immunogen Catalog Number: AG32896	Calculated MW: 295 kDa	

## Applications

Tested Applications: IHC, IF/ICC, ELISA	Positive Controls:
Species Specificity: human	IHC : human prostate cancer tissue, IF/ICC : U2OS cells,
<b>Note-IHC: suggested antigen retrieval with TE buffer pH 9.0; (*) Alternatively, antigen retrieval may be performed with citrate buffer pH 6.0</b>	

## Background Information

### Storage

Storage:  
Store at -20°C. Stable for one year after shipment.  
Storage Buffer:  
PBS with 0.02% sodium azide and 50% glycerol pH 7.3.  
Aliquoting is unnecessary for -20°C storage

For technical support and original validation data for this product please contact:

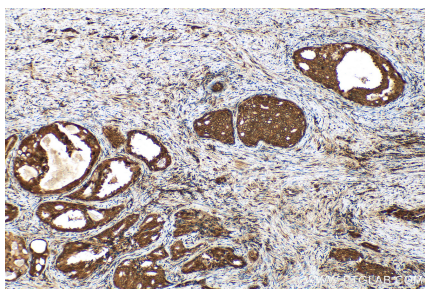
T: 4006900926

E: [Proteintech-CN@ptglab.com](mailto:Proteintech-CN@ptglab.com)

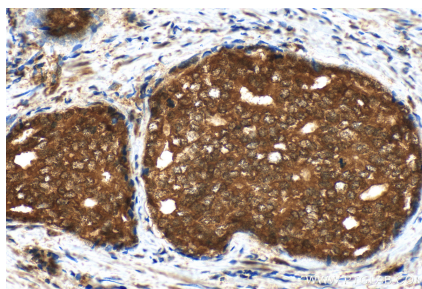
W: [ptgcn.com](http://ptgcn.com)

This product is exclusively available under Proteintech Group brand and is not available to purchase from any other manufacturer.

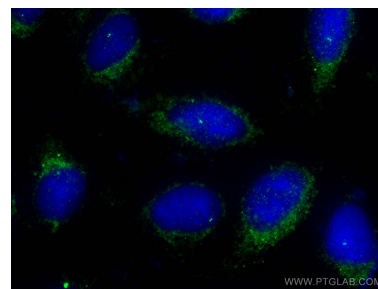
## Selected Validation Data



Immunohistochemical analysis of paraffin-embedded human prostate cancer tissue slide using 30446-1-AP (CEP295 antibody) at dilution of 1:200 (under 10x lens). Heat mediated antigen retrieval with Tris-EDTA buffer (pH 9.0).



Immunohistochemical analysis of paraffin-embedded human prostate cancer tissue slide using 30446-1-AP (CEP295 antibody) at dilution of 1:200 (under 40x lens). Heat mediated antigen retrieval with Tris-EDTA buffer (pH 9.0).



Immunofluorescent analysis of (-20°C Methanol) fixed U2OS cells using CEP295 antibody (30446-1-AP) at dilution of 1:200 and CoraLite®488-Conjugated AffiniPure Goat Anti-Rabbit IgG(H+L) (SA00013-2).