

For Research Use Only

APOE Polyclonal antibody

Catalog Number: 30535-1-AP

Featured Product



Basic Information

Catalog Number:

30535-1-AP

Size:

300 µg/ml

Source:

Rabbit

Isotype:

IgG

GenBank Accession Number:

BC003557

GeneID (NCBI):

348

UNIPROT ID:

P02649

Full Name:

apolipoprotein E

Calculated MW:

36 kDa

Observed MW:

35 kDa

Purification Method:

Antigen affinity purification

Recommended Dilutions:

WB 1:1000-1:8000

IF 1:50-1:500

Applications

Tested Applications:

IF/ICC, WB, ELISA

Species Specificity:

Human

Positive Controls:

WB : HepG2 cells, HuH-7 cells

IF : HepG2 cells,

Background Information

The apolipoprotein E (APOE) is a 299-amino acid polypeptide that mediates the binding, internalization, and catabolism of lipoprotein particles, and also serves as a ligand for the LDL (apo B/E) receptor and for the specific apo-E receptor (chylomicron remnant) of hepatic tissues. The very strong association of the APOE 4 allele with AD risk and its role in the accumulation of amyloid β in brains of people and animal models solidify the biological relevance of APOE isoforms but do not provide mechanistic insight.

Storage

Storage:

Store at -20°C. Stable for one year after shipment.

Storage Buffer:

PBS with 0.02% sodium azide and 50% glycerol pH 7.3.

Aliquoting is unnecessary for -20°C storage

For technical support and original validation data for this product please contact:

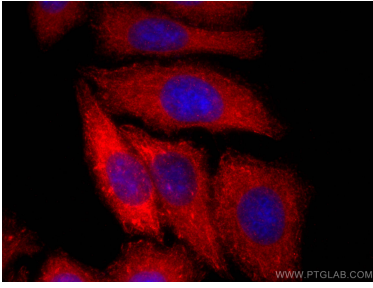
T: 4006900926

E: Proteintech-CN@ptglab.com

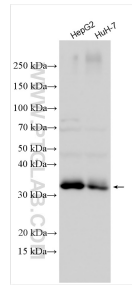
W: ptgcn.com

This product is exclusively available under Proteintech Group brand and is not available to purchase from any other manufacturer.

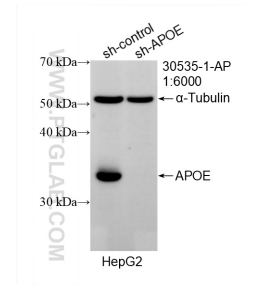
Selected Validation Data



Immunofluorescent analysis of (-20°C Ethanol) fixed HepG2 cells using APOE antibody (30535-1-AP) at dilution of 1:200 and CoraLite®594-Conjugated AffiniPure Goat Anti-Rabbit IgG(H+L).



Various lysates were subjected to SDS PAGE followed by western blot with 30535-1-AP (APOE antibody) at dilution of 1:4000 incubated at room temperature for 1.5 hours.



WB result of APOE antibody (30535-1-AP; 1:6000; incubated at room temperature for 1.5 hours) with sh-Control and sh-APOE transfected HepG2 cells.