

For Research Use Only

CACNA1B Polyclonal antibody

Catalog Number:30625-1-AP



Basic Information

Catalog Number: 30625-1-AP	GenBank Accession Number: NM_000718	Purification Method: Antigen affinity purification
Size: 350 ug/ml	GeneID (NCBI): 774	Recommended Dilutions: WB 1:500-1:3000
Source: Rabbit	UNIPROT ID: Q00975	
Isotype: IgG	Full Name: calcium channel, voltage-dependent, N type, alpha 1B subunit	
Immunogen Catalog Number: AG33516	Calculated MW: 262 kDa	
	Observed MW: 200 kDa	

Applications

Tested Applications: WB, ELISA	Positive Controls: WB : SH-SY5Y cells, Y79 cells
Species Specificity: human	

Background Information

CACNA1B, also named CACH5, CACNL1A5, and BIII, belongs to the calcium channel alpha-1 subunit (TC 1.A.1.11) family. Voltage-sensitive calcium channels (VSCC) mediate the entry of calcium ions into excitable cells and are also involved in a variety of calcium-dependent processes, including muscle contraction, hormone or neurotransmitter release, gene expression, cell motility, cell division, and cell death. CACNA1B gives rise to N-type calcium currents. N-type calcium channels belong to the 'high-voltage activated' (HVA) group and are blocked by omega-conotoxin-GVIA (omega-CTX-GVIA) and by omega-agatoxin-IIIA (omega-Aga-IIIA). They are however insensitive to dihydropyridines (DHP), and omega-agatoxin-IVA (omega-Aga-IVA). CACNA1B may play a role in the directed migration of immature neurons.

Storage

Storage:
Store at -20°C. Stable for one year after shipment.
Storage Buffer:
PBS with 0.02% sodium azide and 50% glycerol pH 7.3.
Aliquoting is unnecessary for -20°C storage

For technical support and original validation data for this product please contact:

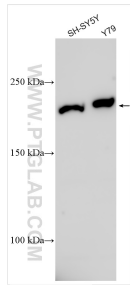
T: 4006900926

E: Proteintech-CN@ptglab.com

W: ptgcn.com

This product is exclusively available under Proteintech Group brand and is not available to purchase from any other manufacturer.

Selected Validation Data



Various lysates were subjected to SDS PAGE followed by western blot with 30625-1-AP (CACNA1B antibody) at dilution of 1:1500 incubated at room temperature for 1.5 hours.