

For Research Use Only

Integrin alpha 2 Polyclonal antibody

Catalog Number:30703-1-AP



Basic Information

Catalog Number: 30703-1-AP	GenBank Accession Number: NM_002203	Purification Method: Antigen affinity purification
Size: 600 ug/ml	GeneID (NCBI): 3673	Recommended Dilutions: WB 1:1000-1:8000 IF/ICC 1:200-1:800
Source: Rabbit	UNIPROT ID: P17301	
Isotype: IgG	Full Name: integrin, alpha 2 (CD49B, alpha 2 subunit of VLA-2 receptor)	
Immunogen Catalog Number: AG32771	Calculated MW: 126 kDa	
	Observed MW: 140-150 kDa	

Applications

Tested Applications: WB, IF/ICC, ELISA	Positive Controls:
Species Specificity: human	WB : HT-1080 cells, A431 cells, HeLa cells, MDA-MB-231 cells IF/ICC : A431 cells,

Background Information

The integrins are a superfamily of cell adhesion receptors that bind to extracellular matrix ligands, cell-surface ligands, and soluble ligands (PMID: 17543136). They are transmembrane $\alpha\beta$ heterodimers and at least 24 distinct integrin heterodimers are formed by the combination of 18 α and eight β known subunits (PMID: 17543136; 20029421). In addition to mediating cell adhesion, integrins also play important roles in modulating signal transduction pathways that control cellular responses including migration, proliferation, differentiation, and apoptosis (PMID:19118207). Integrin alpha-2 (ITGA2, CD49b) combines with the beta 1 subunit (ITGB1, CD29) to form a cell-surface receptor (VLA-2) for laminin, collagen, collagen C-propeptides, fibronectin and E-cadherin.

Storage

Storage:
Store at -20°C. Stable for one year after shipment.
Storage Buffer:
PBS with 0.02% sodium azide and 50% glycerol pH 7.3.
Aliquoting is unnecessary for -20°C storage

For technical support and original validation data for this product please contact:

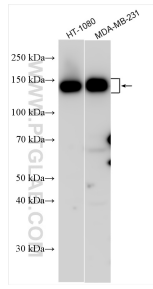
T: 4006900926

E: Proteintech-CN@ptglab.com

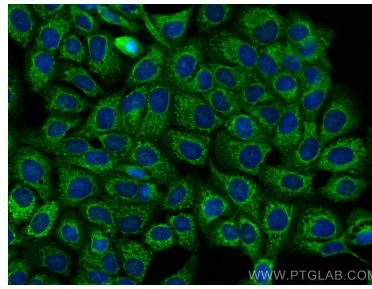
W: ptgcn.com

This product is exclusively available under Proteintech Group brand and is not available to purchase from any other manufacturer.

Selected Validation Data



Various lysates were subjected to SDS PAGE followed by western blot with 30703-1-AP (Integrin alpha 2 antibody) at dilution of 1:4000 incubated at room temperature for 1.5 hours.



Immunofluorescent analysis of (-20°C Methanol) fixed A431 cells using ITGA2 antibody (30703-1-AP) at dilution of 1:400 and CoraLite® 488-Conjugated AffiniPure Goat Anti-Rabbit IgG(H+L).