

For Research Use Only

SUSD2 Polyclonal antibody

Catalog Number:30711-1-AP



Basic Information

Catalog Number: 30711-1-AP	GenBank Accession Number: NM_019601	Purification Method: Antigen affinity purification
Size: 500 ug/ml	GeneID (NCBI): 56241	Recommended Dilutions: WB 1:1000-1:6000 IHC 1:50-1:500
Source: Rabbit	UNIPROT ID: Q9UGT4	
Isotype: IgG	Full Name: sushi domain containing 2	
Immunogen Catalog Number: AG33630	Calculated MW: 90 kDa	
	Observed MW: 60 kDa, 90 kDa, 110 kDa	

Applications

Tested Applications:
WB, IHC, ELISA

Species Specificity:
human, mouse, rat

Note-IHC: suggested antigen retrieval with TE buffer pH 9.0; (*) Alternatively, antigen retrieval may be performed with citrate buffer pH 6.0

Positive Controls:

WB : SK-BR-3 cells, mouse kidney tissue, rat kidney tissue

IHC : mouse kidney tissue,

Background Information

Sushi domain containing 2 (SUSD2) is a type I transmembrane protein that contains a somatomedin B, AMOP, von Willebrand factor type D and Sushi domains, which are frequently found in molecules associated with cell-cell and cell-matrix adhesion. SUSD2 is composed of 822 amino acids with a predicted molecular weight of 90.4 kDa (PMID: 31387209). Three specific SUSD2 bands were present, the glycosylated, full-length protein (~110 kDa), ~90 kDa band represents full-length SUSD2 with minimal glycosylation, and a strong ~60 kDa band, represents a cleaved product of SUSD2 at the GD-PH sequence in the endoplasmic reticulum (PMID:27775699, 32595828).

Storage

Storage:

Store at -20°C. Stable for one year after shipment.

Storage Buffer:

PBS with 0.02% sodium azide and 50% glycerol pH 7.3.

Aliquoting is unnecessary for -20°C storage

For technical support and original validation data for this product please contact:

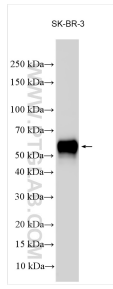
T: 4006900926

E: Proteintech-CN@ptglab.com

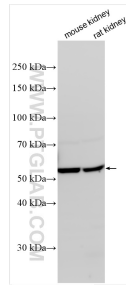
W: ptgcn.com

This product is exclusively available under Proteintech Group brand and is not available to purchase from any other manufacturer.

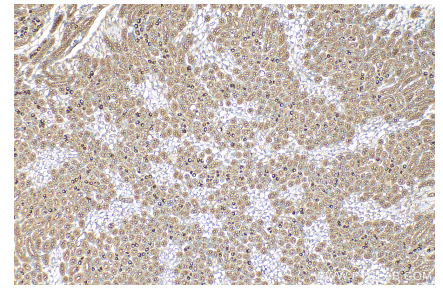
Selected Validation Data



SK-BR-3 cells were subjected to SDS PAGE followed by western blot with 30711-1-AP (SUSD2 antibody) at dilution of 1:3000 incubated at room temperature for 1.5 hours.



Various lysates were subjected to SDS PAGE followed by western blot with 30711-1-AP (SUSD2 antibody) at dilution of 1:3000 incubated at room temperature for 1.5 hours.



Immunohistochemical analysis of paraffin-embedded mouse kidney tissue slide using 30711-1-AP (SUSD2 antibody) at dilution of 1:200 (under 10x lens). Heat mediated antigen retrieval with Tris-EDTA buffer (pH 9.0).