

For Research Use Only

LHX8 Polyclonal antibody

Catalog Number:30722-1-AP



Basic Information

Catalog Number: 30722-1-AP	GenBank Accession Number: BC040321	Purification Method: Antigen affinity purification
Size: 400 ug/ml	GeneID (NCBI): 431707	Recommended Dilutions: WB 1:1000-1:4000 IF/ICC 1:200-1:800
Source: Rabbit	UNIPROT ID: Q68G74	
Isotype: IgG	Full Name: LIM homeobox 8	
Immunogen Catalog Number: AG33787	Calculated MW: 39 kDa	
	Observed MW: 39-44 kDa	

Applications

Tested Applications: WB, IF/ICC, ELISA	Positive Controls: WB : MCF-7 cells, IF/ICC : A549 cells,
Species Specificity: human	

Background Information

LHX8 (LIM homeobox 8), also known as LHX7. It is expected to be located in nucleus and mainly expressed in brain, lymphoid tissue, salivary gland. The calculated molecular weight of METAP1 is 39 kDa. The protein encoded by this gene is a member of the LIM homeobox family of proteins, which are involved in patterning and differentiation of various tissue types. These proteins contain two tandemly repeated cysteine-rich double-zinc finger motifs known as LIM domains, in addition to a DNA-binding homeodomain. It is also involved in oogenesis and in neuronal differentiation. LHX8 is a candidate gene for cleft palate, and it is also associated with odontoma formation (PMID: 34112263).

Storage

Storage:
Store at -20°C. Stable for one year after shipment.
Storage Buffer:
PBS with 0.02% sodium azide and 50% glycerol pH 7.3.
Aliquoting is unnecessary for -20°C storage

For technical support and original validation data for this product please contact:

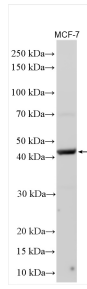
T: 4006900926

E: Proteintech-CN@ptglab.com

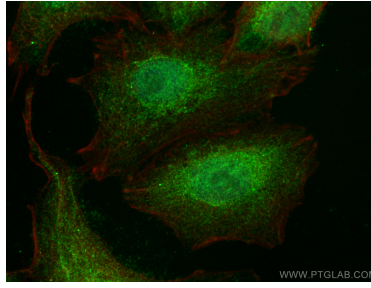
W: ptgcn.com

This product is exclusively available under Proteintech Group brand and is not available to purchase from any other manufacturer.

Selected Validation Data



Various lysates were subjected to SDS PAGE followed by western blot with 30722-1-AP (LHX8 antibody) at dilution of 1:2000 incubated at room temperature for 1.5 hours.



Immunofluorescent analysis of (4% PFA) fixed A549 cells using LHX8 antibody (30722-1-AP) at dilution of 1:400 and Coralite@488-Conjugated AffiniPure Goat Anti-Rabbit IgG(H+L) (SA00013-2), CL594-Phalloidin (red).