

For Research Use Only

Phospho-c-Met (Tyr1234/1235) Polyclonal antibody



Catalog Number: 30737-1-AP

1 Publications

Basic Information

Catalog Number:

30737-1-AP

Size:

450 µg/ml

Source:

Rabbit

Isotype:

IgG

GenBank Accession Number:

BC130420

GeneID (NCBI):

4233

UNIPROT ID:

P08581

Full Name:

met proto-oncogene (hepatocyte growth factor receptor)

Calculated MW:

1390 aa, 155 kDa

Observed MW:

145 kDa

Purification Method:

Antigen affinity purification

Recommended Dilutions:

WB 1:500-1:1000

Applications

Tested Applications:

WB, ELISA

Cited Applications:

WB

Species Specificity:

Human

Cited Species:

human

Positive Controls:

WB : HGF treated A549 cells,

Background Information

c-Met (MET or HGFR) is a receptor tyrosine kinase that transduces signals from the extracellular matrix into the cytoplasm by binding to HGF ligand. The binding of HGF to MET induces MET clustering and phosphorylation of Y1234 and Y1235, followed by phosphorylation of Y1349 and Y1356 in the carboxyl terminal region, to which adaptor molecules associate and transmit signals downstream. (PMID: 28064454)

Notable Publications

Author	Pubmed ID	Journal	Application
Zhao-Hua Xu	38246481	J Ethnopharmacol	WB

Storage

Storage:

Store at -20°C. Stable for one year after shipment.

Storage Buffer:

PBS with 0.02% sodium azide and 50% glycerol pH 7.3.

Aliquoting is unnecessary for -20°C storage

For technical support and original validation data for this product please contact:

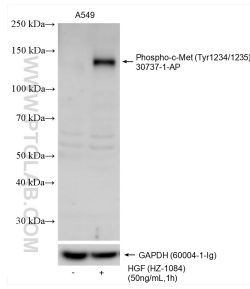
T: 4006900926

E: Proteintech-CN@ptglab.com

W: ptgcn.com

This product is exclusively available under Proteintech Group brand and is not available to purchase from any other manufacturer.

Selected Validation Data



Non-treated and HGF (HZ-1084) treated A549 cells were subjected to SDS PAGE followed by western blot with 30737-1-AP (Phospho-c-Met (Tyr1234/1235) antibody) at dilution of 1:600 incubated at room temperature for 1.5 hours. The membrane was stripped and re-blotted with GAPDH antibody as loading control.