

For Research Use Only

# SSR3 Polyclonal antibody

Catalog Number:30851-1-AP



## Basic Information

**Catalog Number:**

30851-1-AP

**Size:**

300 ug/ml

**Source:**

Rabbit

**Isotype:**

IgG

**Immunogen Catalog Number:**

AG28130

**GenBank Accession Number:**

BC017203

**GeneID (NCBI):**

6747

**UNIPROT ID:**

Q9UNL2

**Full Name:**

signal sequence receptor, gamma  
(translocon-associated protein  
gamma)

**Calculated MW:**

185 aa, 21 kDa

**Observed MW:**

19 kDa

**Purification Method:**

Antigen affinity Purification

**Recommended Dilutions:**

WB 1:5000-1:50000

IF-P 1:50-1:500

## Applications

**Tested Applications:**

WB, IF-P, ELISA

**Species Specificity:**

human, mouse, rat

**Positive Controls:**

**WB :** HeLa cells, U-87 MG cells, mouse testis tissue, rat testis tissue

**IF-P :** mouse brain tissue,

## Background Information

Mammalian TRAP is a heterotetrameric membrane protein complex which comprised of four membrane proteins/subunits: alpha, beta, gamma, and delta. SSR3 is also known as translocon-associated protein subunit gamma (TRAPG). The signal sequence receptor (SSR) is a glycosylated endoplasmic reticulum (ER) membrane receptor associated with protein translocation across the ER membrane. SSR3 assumes a central position in the mammalian TRAP complex, binding to the ribosome on the cytosolic face of the ER membrane and coordinating the remaining TRAP subunits with the ribosome and the other translocon components.

## Storage

**Storage:**

Store at -20°C. Stable for one year after shipment.

**Storage Buffer:**

PBS with 0.02% sodium azide and 50% glycerol pH 7.3.

Aliquoting is unnecessary for -20°C storage

For technical support and original validation data for this product please contact:

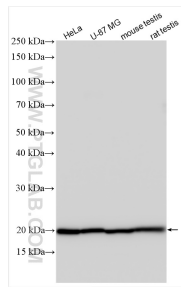
T: 4006900926

E: [Proteintech-CN@ptglab.com](mailto:Proteintech-CN@ptglab.com)

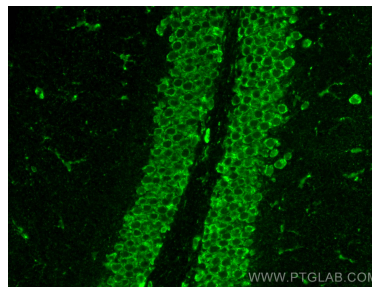
W: [ptgcn.com](http://ptgcn.com)

**This product is exclusively available under Proteintech Group brand and is not available to purchase from any other manufacturer.**

## Selected Validation Data



Various lysates were subjected to SDS PAGE followed by western blot with 30851-1-AP (SSR3 antibody) at dilution of 1:30000 incubated at room temperature for 1.5 hours.



Immunofluorescent analysis of (4% PFA) fixed paraffin-embedded mouse brain tissue using SSR3 antibody (30851-1-AP) at dilution of 1:200 and CoraLite®488-Conjugated AffiniPure Goat Anti-Rabbit IgG(H+L). Heat mediated antigen retrieval with Tris-EDTA buffer (pH 9.0).