

For Research Use Only

Phospho-POLR2A (Ser7) Polyclonal antibody



Catalog Number: 31139-1-AP

Basic Information

Catalog Number:

31139-1-AP

Size:

230 µg/ml

Source:

Rabbit

Isotype:

IgG

GenBank Accession Number:

NM_000937

GeneID (NCBI):

5430

UNIPROT ID:

P24928

Full Name:

polymerase (RNA) II (DNA directed)
polypeptide A, 220kDa

Calculated MW:

217 kDa

Observed MW:

260 kDa

Purification Method:

Antigen affinity purification

Recommended Dilutions:

WB 1:500-1:2000

Applications

Tested Applications:

WB, ELISA

Species Specificity:

Human

Positive Controls:

WB : HeLa cells, λ phosphatase treated HeLa cells

Background Information

DNA-directed RNA polymerase II subunit RPB1(POLR2A), is part of the core element of the basic RNA polymerase II transcription mechanism. During transcription elongation, Pol II moves on the template as the transcript elongates. Elongation is influenced by the phosphorylation status of the C-terminal domain (CTD) of Pol II largest subunit (RPB1), which serves as a platform for the assembly of factors that regulate transcription initiation, elongation, termination, and mRNA processing.

Storage

Storage:

Store at -20°C. Stable for one year after shipment.

Storage Buffer:

PBS with 0.02% sodium azide and 50% glycerol pH 7.3.

Aliquoting is unnecessary for -20°C storage

For technical support and original validation data for this product please contact:

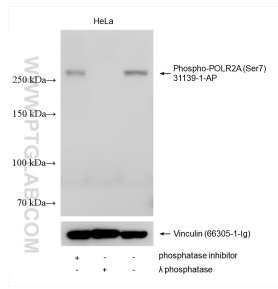
T: 4006900926

E: Proteintech-CN@ptglab.com

W: ptgcn.com

This product is exclusively available under Proteintech Group brand and is not available to purchase from any other manufacturer.

Selected Validation Data



Phosphatase inhibitor treated HeLa cells, λ phosphatase treated HeLa cells, and non-treated HeLa cells, were subjected to SDS PAGE followed by western blot with 31139-1-AP (Phospho-POLR2A (Ser7) antibody) at dilution of 1:1000 incubated at room temperature for 1.5 hours. The membrane was stripped and re-blotted with Vinculin (66305-1-Ig) antibody as a loading control.