

For Research Use Only

# ASCL1 Polyclonal antibody

Catalog Number: 31206-1-AP



## Basic Information

<b>Catalog Number:</b> 31206-1-AP	<b>GenBank Accession Number:</b> BC003134	<b>Purification Method:</b> Antigen affinity Purification
<b>Size:</b> 450 µg/ml	<b>GeneID (NCBI):</b> 429	<b>Recommended Dilutions:</b> WB 1:2000-1:10000
<b>Source:</b> Rabbit	<b>UNIPROT ID:</b> P50553	
<b>Isotype:</b> IgG	<b>Full Name:</b> achaete-scute complex homolog 1 (Drosophila)	
<b>Immunogen Catalog Number:</b> AG35185	<b>Calculated MW:</b> 25 kDa	
	<b>Observed MW:</b> 25 kDa	

## Applications

<b>Tested Applications:</b> WB, ELISA	<b>Positive Controls:</b> WB : K-562 cells, NCI-H1299 cells, U-251 cells, PC-3 cells
<b>Species Specificity:</b> Human	

## Background Information

ASCL1 (achaete-scute family bHLH transcription factor 1), also known as ASH1. It is expected to be located in nucleus. Transcription factor that plays a key role in neuronal differentiation: acts as a pioneer transcription factor, accessing closed chromatin to allow other factors to bind and activate neural pathways. Plays a role at early stages of development of specific neural lineages in most regions of the CNS, and of several lineages in the PNS. Essential for the generation of olfactory and autonomic neurons. Acts synergistically with FOXN4 to specify the identity of V2b neurons rather than V2a from bipotential p2 progenitors during spinal cord neurogenesis, probably through DLL4-NOTCH signaling activation. Involved in the regulation of neuroendocrine cell development in the glandular stomach. The calculated molecular weight of ASCL1 is 25 kDa.

## Storage

**Storage:**  
Store at -20°C. Stable for one year after shipment.  
**Storage Buffer:**  
PBS with 0.02% sodium azide and 50% glycerol pH 7.3.  
Aliquoting is unnecessary for -20°C storage

For technical support and original validation data for this product please contact:

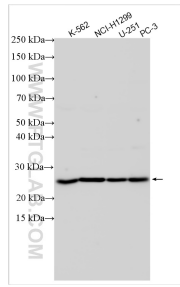
T: 4006900926

E: [Proteintech-CN@ptglab.com](mailto:Proteintech-CN@ptglab.com)

W: [ptgcn.com](http://ptgcn.com)

**This product is exclusively available under Proteintech Group brand and is not available to purchase from any other manufacturer.**

## Selected Validation Data



Various lysates were subjected to SDS PAGE followed by western blot with 31206-1-AP (ASCL1 antibody) at dilution of 1:5000 incubated at room temperature for 1.5 hours.