

For Research Use Only

# Cathepsin B Polyclonal antibody

Catalog Number: 31399-1-AP



## Basic Information

Catalog Number:

31399-1-AP

Size:

270 µg/ml

Source:

Rabbit

Isotype:

IgG

GenBank Accession Number:

NM\_001908.5

GeneID (NCBI):

1508

UNIPROT ID:

P07858

Full Name:

cathepsin B

Calculated MW:

38kDa

Observed MW:

25 kDa and 31 kDa

Purification Method:

Antigen affinity Purification

Recommended Dilutions:

WB 1:500-1:2000

## Applications

Tested Applications:

WB, ELISA

Species Specificity:

Human, Mouse

Positive Controls:

WB : A375 cells, HepG2 cells, RAW 264.7 cells

## Background Information

CTSB(Cathepsin B) is also named as CPSB and belongs to the peptidase C1 family. It participates in intracellular degradation and turnover of proteins. Cathepsin B precursors found in human malignant ascites fluid do not possess mannose-rich carbohydrates suggesting that a defect in the post translational processing of carbohydrate moieties on tumor. Cathepsin B exists as both glycosylated and unglycosylated forms(PMID:1637335). In rat macrophages and hepatocytes pro- cathepsin B is 39 kDa (unglycosylated=35 kDa), whereas in human fibroblasts procathepsin B is 44.5-46kDa (unglycosylated=39kDa)(PMID:2097084). It can be detected the 43 kDa form of pro-CTSB, 31 kDa and 25 kDa mature forms in mouse brain by western blot(PMID:20616152).

## Storage

Storage:

Store at -20°C. Stable for one year after shipment.

Storage Buffer:

PBS with 0.02% sodium azide and 50% glycerol pH 7.3.

Aliquoting is unnecessary for -20°C storage

For technical support and original validation data for this product please contact:

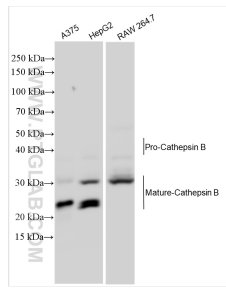
T: 4006900926

E: Proteintech-CN@ptglab.com

W: ptgcn.com

This product is exclusively available under Proteintech Group brand and is not available to purchase from any other manufacturer.

## Selected Validation Data



A375 cells were subjected to SDS PAGE followed by western blot with 31399-1-AP (Cathepsin B antibody) at dilution of 1:1000 incubated at room temperature for 1.5 hours.