

# RAB13 Polyclonal antibody

Catalog Number: 31416-1-AP

## Basic Information

<b>Catalog Number:</b> 31416-1-AP	<b>GenBank Accession Number:</b> BC000799	<b>Purification Method:</b> Antigen affinity Purification
<b>Size:</b> 650 µg/ml	<b>GeneID (NCBI):</b> 5872	<b>Recommended Dilutions:</b> WB 1:1000-1:8000 IHC 1:50-1:500
<b>Source:</b> Rabbit	<b>UNIPROT ID:</b> P51153	
<b>Isotype:</b> IgG	<b>Full Name:</b> RAB13, member RAS oncogene family	
<b>Immunogen Catalog Number:</b> AG34898	<b>Calculated MW:</b> 203 aa, 23 kDa	
	<b>Observed MW:</b> 20-23 kDa	

## Applications

**Tested Applications:**  
WB, IHC, FC (Intra), ELISA

**Species Specificity:**  
human, mouse

**Note-IHC: suggested antigen retrieval with TE buffer pH 9.0; (\*) Alternatively, antigen retrieval may be performed with citrate buffer pH 6.0**

**Positive Controls:**

**WB :** HEK-293T cells, HeLa cells, MCF-7 cells

**IHC :** mouse testis tissue, mouse stomach tissue

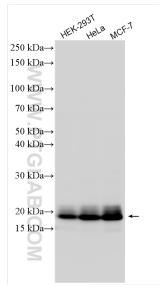
## Background Information

RAB13 (Ras-related protein Rab-13) is also named as GIG4. Rab13 is a member of the Rab GTPase family. RAB13 is highly expressed in malignant cells. Rab13 was highly expressed in BCSC of triple-negative breast cancer (TNBC) (PMID: 35395074). RAB13 is involved in a number of processes in LIHC, including MTORC1 signaling, MYC targets v1, G2M checkpoint, MITOTIC spindle, DNA repair, P53 pathway, glycolysis, PI3K-AKT-MTOR signaling, etc (PMID: 37803063). RAB13 enhances its circulation to the plasma membrane to promote breast cancer invasion. By influencing the tumor microenvironment, RAB13 maintains breast cancer stem cells (PMID: 37803063).

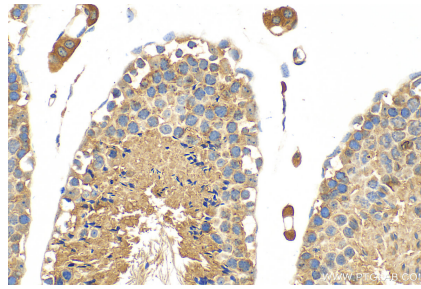
## Storage

**Storage:**  
Store at -20°C. Stable for one year after shipment.  
**Storage Buffer:**  
PBS with 0.02% sodium azide and 50% glycerol pH 7.3.  
Aliquoting is unnecessary for -20°C storage

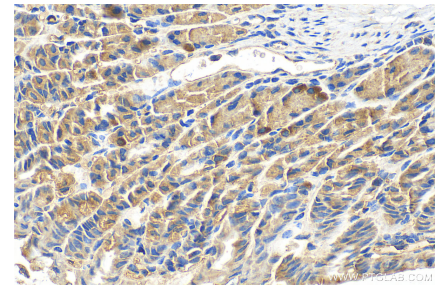
## Selected Validation Data



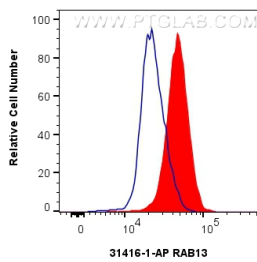
Various lysates were subjected to SDS PAGE followed by western blot with 31416-1-AP (RAB13 antibody) at dilution of 1:4000 incubated at room temperature for 1.5 hours.



Immunohistochemical analysis of paraffin-embedded mouse testis tissue slide using 31416-1-AP (RAB13 antibody) at dilution of 1:200 (under 40x lens). Heat mediated antigen retrieval with Tris-EDTA buffer (pH 9.0).



Immunohistochemical analysis of paraffin-embedded mouse stomach tissue slide using 31416-1-AP (RAB13 antibody) at dilution of 1:200 (under 40x lens). Heat mediated antigen retrieval with Tris-EDTA buffer (pH 9.0).



$1 \times 10^6$  K-562 cells were intracellularly stained with 0.8  $\mu$ g RAB13 Polyclonal antibody (31416-1-AP) and Multi-rAb CoraLite<sup>®</sup> Plus 488-Goat Anti-Rabbit Recombinant Secondary Antibody (H+L) (RGAR002)(red), or 0.8  $\mu$ g Rabbit IgG control Rabbit PolyAb (30000-0-AP) (blue). Cells were fixed with 4% PFA and permeabilized with Flow Cytometry Perm Buffer (PF00011-C).