

For Research Use Only

ACE2 Polyclonal antibody

Catalog Number: 31518-1-AP



Basic Information

Catalog Number: 31518-1-AP	GenBank Accession Number: BC048094	Purification Method: Antigen affinity Purification
Size: 500 ug/ml	GeneID (NCBI): 59272	Recommended Dilutions: WB 1:500-1:1000
Source: Rabbit	UNIPROT ID: Q9BYF1	
Isotype: IgG	Full Name: angiotensin I converting enzyme (peptidyl-dipeptidase A) 2	
	Calculated MW: 805 aa, 92 kDa	
	Observed MW: 120 kDa	

Applications

Tested Applications: WB, ELISA	Positive Controls: WB: mouse kidney tissue, mouse small intestine tissue
Species Specificity: human, mouse	

Background Information

Angiotensin-converting enzyme 2 (ACE2), a homolog of angiotensin-converting enzyme 1 (ACE1), was identified in 2000. ACE2 provides protection against several chronic diseases, including cardiovascular diseases, lung injury, and diabetes. Besides chronic diseases, ACE2 plays a crucial role in severe acute respiratory syndrome coronavirus (SARS-CoV) infection and severe acute respiratory syndrome coronavirus 2 (SARS-CoV-2) infection (hereafter named COVID-19). ACE2 is the host receptor for SARS-CoV and SARS-CoV-2. (PMID: 37608279)

Storage

Storage:
Store at -20°C. Stable for one year after shipment.
Storage Buffer:
PBS with 0.02% sodium azide and 50% glycerol pH 7.3.
Aliquoting is unnecessary for -20°C storage

For technical support and original validation data for this product please contact:

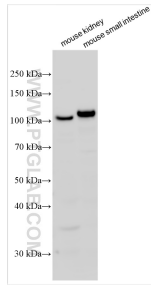
T: 4006900926

E: Proteintech-CN@ptglab.com

W: ptgcn.com

This product is exclusively available under Proteintech Group brand and is not available to purchase from any other manufacturer.

Selected Validation Data



Various lysates were subjected to SDS PAGE followed by western blot with 31518-1-AP (ACE2 antibody) at dilution of 1:800 incubated at room temperature for 1.5 hours.