

# SCRT1 Polyclonal antibody

Catalog Number: 31577-1-AP

## Basic Information

**Catalog Number:**

31577-1-AP

**Size:**

750 ug/ml

**Source:**

Rabbit

**Isotype:**

IgG

**Immunogen Catalog Number:**

AG36215

**GenBank Accession Number:**

BC168377

**GeneID (NCBI):**

83482

**UNIPROT ID:**

Q9BWW7

**Full Name:**scratch homolog 1, zinc finger protein  
(Drosophila)**Observed MW:**

36 kDa

**Purification Method:**

Antigen affinity Purification

**Recommended Dilutions:**

WB 1:500-1:2000

## Applications

**Tested Applications:**

WB, ELISA

**Species Specificity:**

human, mouse

**Positive Controls:**

WB : TT cells, mouse brain tissue

## Background Information

SCRT1 (Transcriptional repressor scratch 1), which is expressed in many tissues, especially in brain and adrenal gland. In addition, SCRT1 is also expressed in islet  $\beta$  cells, and its expression is related to insulin secretion ability. SCRT1 is a C2H2 zinc finger transcription inhibitor, which can bind to E-box motif. The encoded protein may promote nerve differentiation and may be related to cancer with neuroendocrine characteristics. The functions of SCRT1 in islet  $\beta$  cells include regulating the expression and secretion of insulin and influencing the proliferation of  $\beta$  cells. SCRT1 may control calcineurin /NFAT signaling pathway by affecting the expression of Syt4, Notch1, Nfatc1 and Nfatc2 genes, which is an important regulator of the growth and function of  $\beta$  cells (PMID: 33309639). The molecular weight of SCRT1 is 36 kDa.

## Storage

**Storage:**

Store at -20°C. Stable for one year after shipment.

**Storage Buffer:**

PBS with 0.02% sodium azide and 50% glycerol pH 7.3.

Aliquoting is unnecessary for -20°C storage

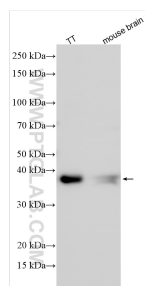
For technical support and original validation data for this product please contact:

T: 4006900926

E: [Proteintech-CN@ptglab.com](mailto:Proteintech-CN@ptglab.com)W: [ptgcn.com](http://ptgcn.com)

This product is exclusively available under Proteintech Group brand and is not available to purchase from any other manufacturer.

## Selected Validation Data



Various lysates were subjected to SDS PAGE followed by western blot with 31577-1-AP (SCRT1 antibody) at dilution of 1:1000 incubated at room temperature for 1.5 hours.