

For Research Use Only

EFHD2 Polyclonal antibody

Catalog Number: 31624-1-AP



Basic Information

Catalog Number: 31624-1-AP	GenBank Accession Number: BC023611	Purification Method: Antigen affinity Purification
Size: 450 ug/ml	GeneID (NCBI): 79180	Recommended Dilutions: WB 1:2000-1:16000
Source: Rabbit	UNIPROT ID: Q96C19	
Isotype: IgG	Full Name: EF-hand domain family, member D2	
Immunogen Catalog Number: AG35084	Calculated MW: 27 kDa	
	Observed MW: 27-30 kDa	

Applications

Tested Applications: WB, ELISA	Positive Controls: WB : A549 cells, NCI-H1299 cells, SW480 cells
Species Specificity: human, mouse	

Background Information

EF-hand domain-containing protein D2 (also known as Swiprosin-1) is a calcium-binding protein with two conserved EF-chiral coiled-coil structural domains, and it is mostly involved in calcium signaling, cytoskeleton assembly and synapse formation. EFHD2 is broadly expressed in various cell types, with particularly high expression in neurons.

Storage

Storage:
Store at -20°C. Stable for one year after shipment.
Storage Buffer:
PBS with 0.02% sodium azide and 50% glycerol pH 7.3.
Aliquoting is unnecessary for -20°C storage

For technical support and original validation data for this product please contact:

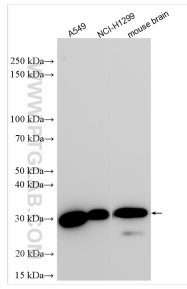
T: 4006900926

E: Proteintech-CN@ptglab.com

W: ptgcn.com

This product is exclusively available under Proteintech Group brand and is not available to purchase from any other manufacturer.

Selected Validation Data



Various lysates were subjected to SDS PAGE followed by western blot with 31624-1-AP (EFHD2 antibody) at dilution of 1:8000 incubated at room temperature for 1.5 hours.