

For Research Use Only

INTS6 Polyclonal antibody

Catalog Number: 31664-1-AP

Featured Product



Basic Information

Catalog Number:

31664-1-AP

Source:

Rabbit

Isotype:

IgG

Immunogen Catalog Number:

AG36146

GenBank Accession Number:

BC039829

GeneID (NCBI):

26512

UNIPROT ID:

Q9UL03

Full Name:

integrator complex subunit 6

Calculated MW:

100 kDa

Observed MW:

130 kDa

Purification Method:

Antigen affinity Purification

Recommended Dilutions:

WB: 1:2000-1:10000

IHC: 1:50-1:500

Applications

Tested Applications:

WB, IHC, ELISA

Species Specificity:

human

Note-IHC: suggested antigen retrieval with TE buffer pH 9.0; (*) Alternatively, antigen retrieval may be performed with citrate buffer pH 6.0

Positive Controls:

WB : DU 145 cells, MCF-7 cells, HuH-7 cells, L02 cells, PC-3 cells, LNCaP cells

IHC : human ovary cancer tissue,

Background Information

INTS6 is a component of the Integrator (INT) complex, a complex involved in the small nuclear RNAs (snRNA) U1 and U2 transcription and in their 3'-box-dependent processing.

Storage

Storage:

Store at -20°C. Stable for one year after shipment.

Storage Buffer:

PBS with 0.02% sodium azide and 50% glycerol, pH7.3

Aliquoting is unnecessary for -20°C storage

For technical support and original validation data for this product please contact:

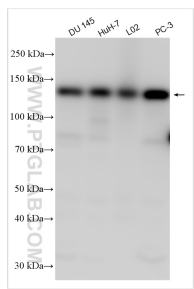
T: 4006900926

E: Proteintech-CN@ptglab.com

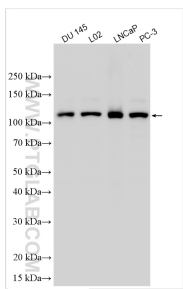
W: ptgcn.com

This product is exclusively available under Proteintech Group brand and is not available to purchase from any other manufacturer.

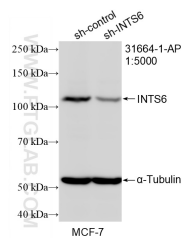
Selected Validation Data



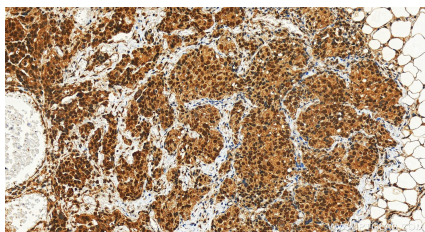
Various lysates were subjected to SDS PAGE followed by western blot with 31664-1-AP (INTS6 antibody) at dilution of 1:1500 incubated at room temperature for 1.5 hours.



Various lysates were subjected to SDS PAGE followed by western blot with 31664-1-AP (INTS6 antibody) at dilution of 1:5000 incubated at room temperature for 1.5 hours.



WB result of INTS6 antibody (31664-1-AP; 1:5000; incubated at room temperature for 1.5 hours) with sh-Control and sh-INTS6 transfected MCF-7 cells.



Immunohistochemical analysis of paraffin-embedded human ovary cancer tissue slide using 31664-1-AP (INTS6 antibody) at dilution of 1:200 (under 20x lens). Heat mediated antigen retrieval with Tris-EDTA buffer (pH 9.0).