

For Research Use Only

# KBTBD8 Polyclonal antibody

Catalog Number: 31970-1-AP

Featured Product



## Basic Information

Catalog Number:

31970-1-AP

Size:

400 ug/ml

Source:

Rabbit

Isotype:

IgG

Immunogen Catalog Number:

AG36219

GenBank Accession Number:

NM\_032505.2

GeneID (NCBI):

84541

UNIPROT ID:

Q8NFY9

Full Name:

kelch repeat and BTB (POZ) domain containing 8

Calculated MW:

69 kDa, 601aa

Observed MW:

60 kDa

Purification Method:

Antigen affinity Purification

Recommended Dilutions:

WB 1:500-1:3000

## Applications

Tested Applications:

WB, ELISA

Species Specificity:

human

Positive Controls:

WB : Daudi cells, RKO cells, U-118 MG cells

## Background Information

Kelch repeat and BTB domain containing 8 (KBTBD8, also known as TAKRP and TA-KRP) is a member of the BTB-kelch family of proteins, which is specifically localized at the Golgi apparatus in nondividing cells and becomes restricted to the spindle apparatus upon mitosis (PMID: 23578279). KBTBD family proteins are involved in ubiquitination in various cells and tissues and are correlated with human muscle diseases (PMID: 9878064; 16547521; 24959344). The expression level of KBTBD8 might affect the proliferation and migration of epithelial ovarian cancer (PMID: 33109073).

## Storage

Storage:

Store at -20°C. Stable for one year after shipment.

Storage Buffer:

PBS with 0.02% sodium azide and 50% glycerol pH 7.3.

Aliquoting is unnecessary for -20°C storage

For technical support and original validation data for this product please contact:

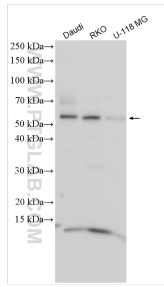
T: 4006900926

E: [Proteintech-CN@ptglab.com](mailto:Proteintech-CN@ptglab.com)

W: [ptgcn.com](http://ptgcn.com)

This product is exclusively available under Proteintech Group brand and is not available to purchase from any other manufacturer.

## Selected Validation Data



Various lysates were subjected to SDS PAGE followed by western blot with 31970-1-AP (KBTBD8 antibody) at dilution of 1:1500 incubated at room temperature for 1.5 hours.