

For Research Use Only

# CD107b / LAMP2 Polyclonal antibody

Catalog Number: 32148-1-AP



## Basic Information

Catalog Number:

32148-1-AP

Size:

550 ug/ml

Source:

Rabbit

Isotype:

IgG

GenBank Accession Number:

NM\_001017959.2

GeneID (NCBI):

16784

UNIPROT ID:

P17047-1

Full Name:

lysosomal-associated membrane protein 2

Calculated MW:

46 kDa

Observed MW:

70-100 kDa

Purification Method:

Antigen affinity Purification

Recommended Dilutions:

WB 1:1000-1:4000

## Applications

Tested Applications:

Species Specificity:

mouse, rat

Positive Controls:

WB : NIH/3T3 cells, Neuro-2a cells, RAW 264.7 cells, mouse liver tissue, rat liver tissue

## Background Information

LAMP2 (CD107b) is a Lysosomal membrane glycoprotein. LAMP2 is extensively glycosylated with asparagine-linked oligosaccharides which protect it from intracellular proteolysis (PMID: 10521503). Although LAMP-2 is localized primarily in the endosome-lysosomal membrane of cells, it is also found on the plasma membrane under certain circumstances, e.g., after platelet activation, during granulocytic differentiation and activation, and in some tumor cells (PMID: 12221139). LAMP2 is involved in lysosomal stability and autophagy (PMID: 12221139). This glycoprotein provides selectins with carbohydrate ligands. LAMP2 may play a role in tumor cell metastasis (PMID 9426697).

## Storage

Storage:

Store at -20°C. Stable for one year after shipment.

Storage Buffer:

PBS with 0.02% sodium azide and 50% glycerol pH 7.3.

Aliquoting is unnecessary for -20°C storage

For technical support and original validation data for this product please contact:

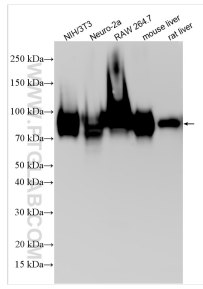
T: 4006900926

E: [Proteintech-CN@ptglab.com](mailto:Proteintech-CN@ptglab.com)

W: [ptgcn.com](http://ptgcn.com)

This product is exclusively available under Proteintech Group brand and is not available to purchase from any other manufacturer.

## Selected Validation Data



Various lysates were subjected to SDS PAGE followed by western blot with 32148-1-AP (CD107b / LAMP2 antibody) at dilution of 1:2000 incubated at room temperature for 1.5 hours.