

For Research Use Only

# Cyclophilin A Polyclonal antibody

Catalog Number: 51040-1-AP **1 Publications**



## Basic Information

Catalog Number:

51040-1-AP

Size:

300 µg/ml

Source:

Rabbit

Isotype:

IgG

Immunogen Catalog Number:

AG0480

GenBank Accession Number:

BC000689

GeneID (NCBI):

5478

UNIPROT ID:

P62937

Full Name:

peptidylprolyl isomerase A  
(cyclophilin A)

Calculated MW:

18 kDa

Observed MW:

18 kDa

Purification Method:

Antigen affinity purification

Recommended Dilutions:

WB 1:500-1:1000

## Applications

Tested Applications:

WB, ELISA

Cited Applications:

WB

Species Specificity:

human, mouse, rat

Cited Species:

human

Positive Controls:

WB: Jurkat cells,

## Background Information

PPIA, also named as CYPA and Rotamase A, belongs to the cyclophilin-type PPIase family and PPIase A subfamily. PPIases accelerate the folding of proteins. It catalyzes the cis-trans isomerization of proline imidic peptide bonds in oligopeptides. PPIA forms a trimolecular complex with cyclophilin and calcineurins to inhibit calcineurin phosphatase activity. PPIA is incorporated into the virion of the type 1 human immunodeficiency virus (HIV-1) via a direct interaction with the capsid domain of the viral Gag polyprotein and is crucial for efficient viral replication.

## Notable Publications

Author	Pubmed ID	Journal	Application
Zhigang Bai	21165559	Int J Oncol	WB

## Storage

Storage:

Store at -20°C.

Storage Buffer:

PBS with 0.02% sodium azide and 50% glycerol pH 7.3.

Aliquoting is unnecessary for -20°C storage

For technical support and original validation data for this product please contact:

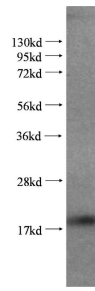
T: 4006900926

E: [Proteintech-CN@ptglab.com](mailto:Proteintech-CN@ptglab.com)

W: [ptgcn.com](http://ptgcn.com)

**This product is exclusively available under Proteintech Group brand and is not available to purchase from any other manufacturer.**

## Selected Validation Data



Jurkat cells were subjected to SDS PAGE followed by western blot with 51040-1-AP (Cyclophilin A antibody) at dilution of 1:500 incubated at room temperature for 1.5 hours.