

For Research Use Only

# EGFR (C-terminal) Polyclonal antibody



Catalog Number: 51071-2-AP

21 Publications

## Basic Information

**Catalog Number:**

51071-2-AP

**Size:**

4000 µg/ml

**Source:**

Rabbit

**Isotype:**

IgG

**GenBank Accession Number:**

BC094761

**GeneID (NCBI):**

1956

**UNIPROT ID:**

P00533

**Full Name:**

epidermal growth factor receptor (erythroblastic leukemia viral (v-erb-b) oncogene homolog, avian)

**Calculated MW:**

1210 aa, 134 kDa

**Observed MW:**

170 kDa

**Purification Method:**

Antigen affinity purification

**Recommended Dilutions:**

WB 1:500-1:2000

IP 0.5-4.0 µg for 1.0-3.0 mg of total protein lysate

IF 1:200-1:800

## Applications

**Tested Applications:**

IF/ICC, IP, WB, ELISA

**Cited Applications:**

CoIP, IF, IHC, WB

**Species Specificity:**

human

**Cited Species:**

human, mouse, pig

**Positive Controls:**

WB: A431 cells, HeLa cells, L02 cells

IP: A431 cells,

IF: A431 cells,

## Background Information

EGFR, also named as ERBB1, is a cell-surface receptor for members of the epidermal growth factor family (EGF-family) of extracellular protein ligands. Binding of the protein to a ligand induces receptor dimerization and tyrosine autophosphorylation and leads to cell proliferation. The gene resides on chromosome 7p12, encoding a 170 kDa membrane-associated glycoprotein. Recent studies have shown EGFR plays a critical role in cancer development and progression, including cell proliferation, apoptosis, angiogenesis, and metastatic spread. Mutations in this gene are associated with lung cancer. The antibody is specific to isoform1.

## Notable Publications

Author	Pubmed ID	Journal	Application
Samusi Adediran	36230550	Cancers (Basel)	WB
Xiaojin Liu	36230833	Cancers (Basel)	WB
Minglu Liu	36467051	Front Pharmacol	WB

## Storage

**Storage:**

Store at -20°C. Stable for one year after shipment.

**Storage Buffer:**

PBS with 0.02% sodium azide and 50% glycerol pH 7.3.

Aliquoting is unnecessary for -20°C storage

For technical support and original validation data for this product please contact:

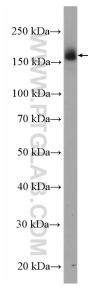
T: 4006900926

E: Proteintech-CN@ptglab.com

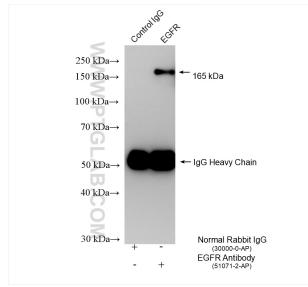
W: ptgcn.com

This product is exclusively available under Proteintech Group brand and is not available to purchase from any other manufacturer.

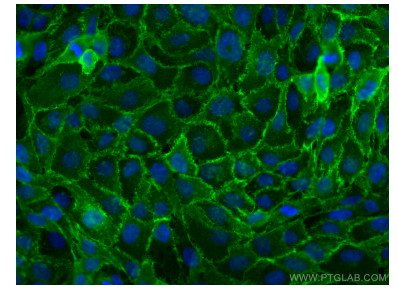
## Selected Validation Data



A431 cells were subjected to SDS PAGE followed by western blot with 51071-2-AP (EGFR (C-terminal) antibody) at dilution of 1:1000 incubated at room temperature for 1.5 hours.



IP result of anti-EGFR (C-terminal) (IP:51071-2-AP, 4ug; Detection:51071-2-AP 1:30000) with A431 cells lysate 1200 ug.



Immunofluorescent analysis of (4% PFA) fixed A431 cells using EGFR (C-terminal) antibody (51071-2-AP) at dilution of 1:400 and CoraLite®488-Conjugated AffiniPure Goat Anti-Rabbit IgG(H+L).