

For Research Use Only

# MAP1A Polyclonal antibody

Catalog Number: 55062-1-AP



## Basic Information

Catalog Number:

55062-1-AP

Size:

450 µg/ml

Source:

Rabbit

Isotype:

IgG

GenBank Accession Number:

NM\_002373

GeneID (NCBI):

4130

UNIPROT ID:

P78559

Full Name:

microtubule-associated protein 1A

Calculated MW:

305 kDa

Purification Method:

Antigen affinity purification

Recommended Dilutions:

IHC 1:250-1:1000

## Applications

Tested Applications:

IHC, ELISA

Species Specificity:

mouse, rat, human

**Note-IHC: suggested antigen retrieval with TE buffer pH 9.0; (\*) Alternatively, antigen retrieval may be performed with citrate buffer pH 6.0**

Positive Controls:

IHC : mouse cerebellum tissue, rat brain tissue

## Background Information

The assembly of microtubules, an essential step in neurogenesis, is modulated by the family of microtubule-associated proteins (MAPs). These proteins have been divided into 2 main groups by molecular mass, high molecular weight MAPs, which include MAP1A, MAP1B, and MAP2, and another group of intermediate-sized proteins, which include the abundant tau MAPs. MAP1A is the largest brain MAP and expressed prominently in dendrites and to a lesser extent in cell bodies and axons. This protein is involved in differentiation of axons and dendrites as well as maintenance of the microtubule cytoskeleton in mature neurons.

## Storage

Storage:

Store at -20°C. Stable for one year after shipment.

Storage Buffer:

0.1M NaHCO<sub>3</sub>, 0.1M glycine, 0.02% sodium azide and 50% glycerol pH 7.3.

Aliquoting is unnecessary for -20°C storage

For technical support and original validation data for this product please contact:

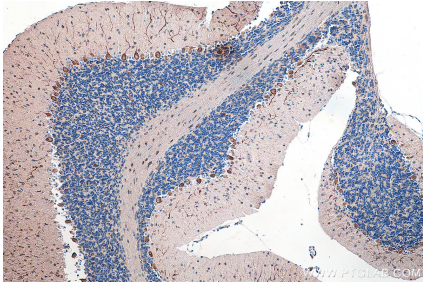
T: 4006900926

E: [Proteintech-CN@ptglab.com](mailto:Proteintech-CN@ptglab.com)

W: [ptgcn.com](http://ptgcn.com)

**This product is exclusively available under Proteintech Group brand and is not available to purchase from any other manufacturer.**

## Selected Validation Data



Immunohistochemical analysis of paraffin-embedded mouse cerebellum tissue slide using 55062-1-AP (MAP1A antibody) at dilution of 1:500 (under 0x lens). Heat mediated antigen retrieval with Tris-EDTA buffer (pH 9.0).