

For Research Use Only

GUCY2D Polyclonal antibody

Catalog Number: 55127-1-AP **2 Publications**



Basic Information

Catalog Number:

55127-1-AP

Size:

350 µg/ml

Source:

Rabbit

Isotype:

IgG

GenBank Accession Number:

NM_000180

GeneID (NCBI):

3000

UNIPROT ID:

Q02846

Full Name:

guanylate cyclase 2D, membrane (retina-specific)

Calculated MW:

120 kDa

Observed MW:

120 kDa, 95 kDa

Purification Method:

Antigen affinity purification

Recommended Dilutions:

WB 1:500-1:1000

Applications

Tested Applications:

WB, ELISA

Cited Applications:

WB, IF

Species Specificity:

human, mouse, rat

Cited Species:

human, mouse

Positive Controls:

WB : mouse brain tissue, human brain tissue

Background Information

GUCY2D, also named as CORD6, GUC1A4, GUC2D, RETGC, RETGC1 and ROS-GC, belongs to the adenylyl cyclase class-4/guanylyl cyclase family. It probably plays a specific functional role in the rods and/or cones of photoreceptors. It may be the enzyme involved in the resynthesis of cGMP required for recovery of the dark state after phototransduction. A number of nonsense and frameshift mutations in the GUCY2D gene have been identified in LCA1 patients. Defects in GUCY2D are the cause of cone-rod dystrophy type 6 (CORD6). GUCY2D is responsible for many reported cases of autosomal dominant CRDs. The antibody is specific to GUCY2D.

Notable Publications

Author	Pubmed ID	Journal	Application
Poppy Datta	31694913	J Biol Chem	WB, IF
Suguru Yamasaki	35024589	iScience	IF

Storage

Storage:

Store at -20°C.

Storage Buffer:

PBS with 0.02% sodium azide and 50% glycerol pH 7.3.

Aliquoting is unnecessary for -20°C storage

For technical support and original validation data for this product please contact:

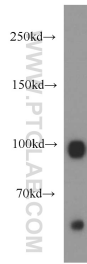
T: 4006900926

E: Proteintech-CN@ptglab.com

W: ptgcn.com

This product is exclusively available under Proteintech Group brand and is not available to purchase from any other manufacturer.

Selected Validation Data



mouse brain tissue were subjected to SDS PAGE followed by western blot with 55127-1-AP (GUCY2D antibody) at dilution of 1:300 incubated at room temperature for 1.5 hours.