

## Caspase 12 Polyclonal antibody

Catalog Number: 55238-1-AP

Featured Product

107 Publications

## Basic Information

## Catalog Number:

55238-1-AP

## Concentration:

550 µg/ml

## Source:

Rabbit

## Isotype:

IgG

## GenBank Accession Number:

NR\_000035

## GeneID (NCBI):

120329

## Full Name:

caspase 12 (gene/pseudogene)

## Calculated MW:

39 kDa

## Observed MW:

36-42 kDa, 50 kDa

## Purification Method:

Antigen affinity purification

## Recommended Dilutions:

WB: 1:500-1:2000

IP: 0.5-4.0 µg for 1.0-3.0 mg of total protein lysate

IHC: 1:50-1:500

IF/ICC: 1:50-1:500

## Applications

## Tested Applications:

WB, IHC, IF/ICC, IP, ELISA

## Cited Applications:

WB, IHC, IF

## Species Specificity:

human

## Cited Species:

human, pig, hamster

**Note-IHC: suggested antigen retrieval with TE buffer pH 9.0; (\*) Alternatively, antigen retrieval may be performed with citrate buffer pH 6.0**

## Positive Controls:

WB: HEK-293 cells, multi-cells

IP: HEK-293 cells,

IHC: human prostate hyperplasia tissue, human heart tissue

IF/ICC: HeLa cells,

## Background Information

Caspase 12 is an enzyme known as a cysteine protease. It belongs to a family of enzymes called caspases that cleave their substrates at C-terminal aspartic acid residues. It is most highly related to members of the ICE subfamily of caspases that process inflammatory cytokines. Caspase-12 is located in the endoplasmic reticulum (ER). It is responsible for ER-stress-induced apoptosis, such as high calcium concentration, low oxygen and low glucose levels. Caspase-12 Antibody detects endogenous levels of full-length caspase-12 protein (50 kDa) and its cleaved product (40-44 kDa). This antibody does not cross-react with other caspases.

## Notable Publications

Author	Pubmed ID	Journal	Application
Xiaowei Niu	30232231	Biosci Rep	WB
Yu Wang	32897804	Pharm Biol	WB
Meng Wang	33014875	Front Oncol	WB

## Storage

## Storage:

Store at -20°C. Stable for one year after shipment.

## Storage Buffer:

PBS with 0.02% sodium azide and 50% glycerol, pH7.3

Aliquoting is unnecessary for -20°C storage

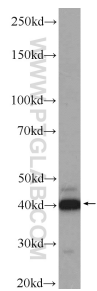
For technical support and original validation data for this product please contact:

T: 4006900926

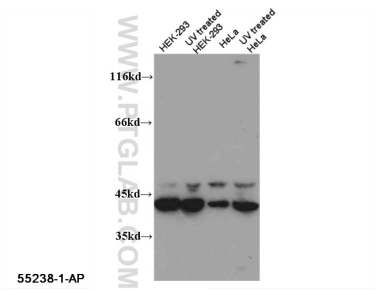
E: [Proteintech-CN@ptglab.com](mailto:Proteintech-CN@ptglab.com)W: [ptgcn.com](http://ptgcn.com)

This product is exclusively available under Proteintech Group brand and is not available to purchase from any other manufacturer.

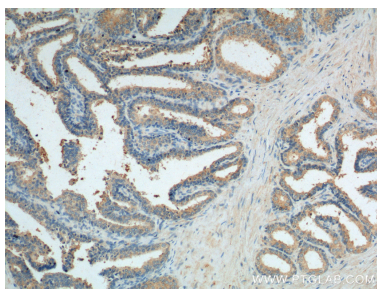
Selected Validation Data



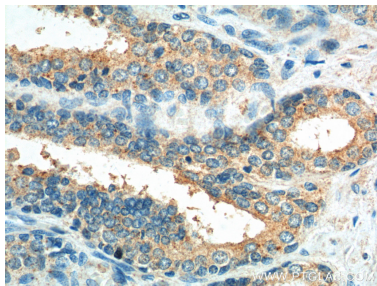
HEK-293 cells were subjected to SDS PAGE followed by western blot with 55238-1-AP (CASP12 antibody) at dilution of 1:1000 incubated at room temperature for 1.5 hours.



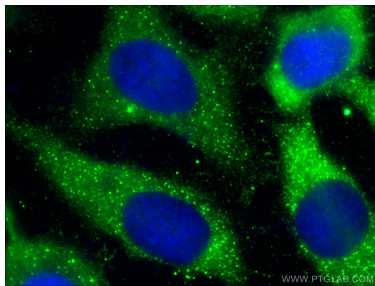
WB result of 55238-1-AP (CASP12 antibody) with various lysates.



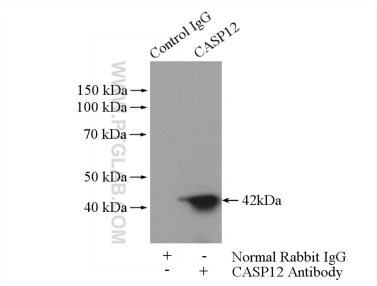
Immunohistochemical analysis of paraffin-embedded human prostate hyperplasia tissue slide using 55238-1-AP (Caspase 12 Antibody) at dilution of 1:200 (under 10x lens).



Immunohistochemical analysis of paraffin-embedded human prostate hyperplasia tissue slide using 55238-1-AP (Caspase 12 Antibody) at dilution of 1:200 (under 40x lens).



Immunofluorescent analysis of (10% Formaldehyde) fixed HeLa cells using 55238-1-AP (Caspase 12 antibody) at dilution of 1:50 and Alexa Fluor 488-conjugated Goat Anti-Rabbit IgG(H+L).



IP result of anti-Caspase 12 (IP:55238-1-AP, 4ug; Detection:55238-1-AP 1:1000) with HEK-293 cells lysate 2000ug.