

For Research Use Only

# EVC2 Polyclonal antibody

Catalog Number: 55367-1-AP



## Basic Information

<b>Catalog Number:</b> 55367-1-AP	<b>GenBank Accession Number:</b> NM_147127	<b>Purification Method:</b> Antigen affinity purification
<b>Size:</b> 700 µg/ml	<b>GeneID (NCBI):</b> 132884	<b>Recommended Dilutions:</b> WB 1:500-1:2000 IHC 1:50-1:500
<b>Source:</b> Rabbit	<b>UNIPROT ID:</b> Q86UK5	
<b>Isotype:</b> IgG	<b>Full Name:</b> Ellis van Creveld syndrome 2	
	<b>Calculated MW:</b> 148 kDa	
	<b>Observed MW:</b> 140 kDa	

## Applications

<b>Tested Applications:</b> IHC, WB, ELISA	<b>Positive Controls:</b> WB : mouse lung tissue, IHC : human placenta tissue,
<b>Species Specificity:</b> Mouse, Human	
<b>Note-IHC: suggested antigen retrieval with TE buffer pH 9.0; (*) Alternatively, antigen retrieval may be performed with citrate buffer pH 6.0</b>	

## Background Information

EVC2 (also known as LIMBIN) is close proximity in divergent orientation to EVC and mutations in both human genes lead to the chondrodysplasia Ellis-van Creveld (EvC) syndrome. Typical symptoms of EvC include shorter limbs and ribs, postaxial polydactyly, dysplastic nails, and cardiovascular defects (PMID: 28081373). Additionally, EvC syndrome has been characterized as a ciliopathy because the EVC and EVC2 proteins are intracellularly localized at the bottom of the primary cilium, where they form a heterotrimeric protein complex with SMO and transduce Hedgehog(Hh) signaling (PMID: 30410447). EVC2 is expressed in the heart, placenta, lung, liver, skeletal muscle, kidney, and pancreas. EVC2 has 3 isoforms with the molecular mass of 140-148 kDa.

## Storage

**Storage:**  
Store at -20°C. Stable for one year after shipment.  
**Storage Buffer:**  
PBS with 0.02% sodium azide and 50% glycerol pH 7.3.  
Aliquoting is unnecessary for -20°C storage

For technical support and original validation data for this product please contact:

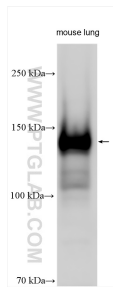
T: 4006900926

E: Proteintech-CN@ptglab.com

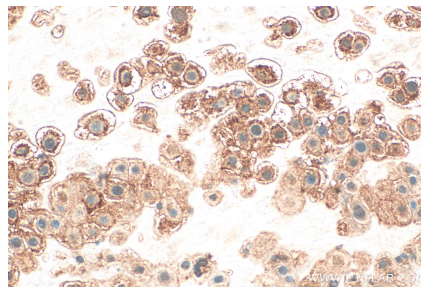
W: ptgcn.com

**This product is exclusively available under Proteintech Group brand and is not available to purchase from any other manufacturer.**

## Selected Validation Data



Mouse lung tissue were subjected to SDS PAGE followed by western blot with 55367-1-AP (EVC2 antibody) at dilution of 1:1000 incubated at room temperature for 1.5 hours.



Immunohistochemical analysis of paraffin-embedded human placenta tissue slide using 55367-1-AP (EVC2 antibody) at dilution of 1:200 (under 40x lens). Heat mediated antigen retrieval with Tris-EDTA buffer (pH 9.0).