

For Research Use Only

LRRC38 Polyclonal antibody

Catalog Number: 55479-1-AP



Basic Information

Catalog Number:

55479-1-AP

Size:

800 µg/ml

Source:

Rabbit

Isotype:

IgG

GenBank Accession Number:

XM_001713942

GeneID (NCBI):

126755

Full Name:

leucine rich repeat containing 38

Calculated MW:

32 kDa

Observed MW:

32 kDa

Purification Method:

Antigen affinity purification

Recommended Dilutions:

WB 1:200-1:1000

Applications

Tested Applications:

WB, ELISA

Species Specificity:

human, mouse

Positive Controls:

WB : RAW 264.7 cells,

Background Information

The large-conductance, calcium- and voltage-activated potassium (BK) channels are characterized by their large conductance of potassium ions (K⁺) through cell membranes. BK channels are widely expressed with diverse functions in different tissues or cell types, consisting of the pore-forming, voltage- and, calcium-sensing alpha subunits, either alone or in association with regulatory subunits (PMID: 25360119; 22547800). LRRC38 belongs to the gamma family of BK channel accessory subunits that regulate channel gating properties.

Storage

Storage:

Store at -20°C.

Storage Buffer:

PBS with 0.02% sodium azide and 50% glycerol pH 7.3.

Aliquoting is unnecessary for -20°C storage

For technical support and original validation data for this product please contact:

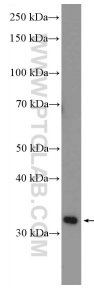
T: 4006900926

E: Proteintech-CN@ptglab.com

W: ptgcn.com

This product is exclusively available under Proteintech Group brand and is not available to purchase from any other manufacturer.

Selected Validation Data



RAW 264.7 cells were subjected to SDS PAGE followed by western blot with 55479-1-AP (LRRC38 Antibody) at dilution of 1:300 incubated at room temperature for 1.5 hours.