

For Research Use Only

CD38 Monoclonal antibody, PBS Only

Catalog Number: 60006-1-PBS

Featured Product



Basic Information

Catalog Number: 60006-1-PBS	GenBank Accession Number: BC007964	Purification Method: Protein G purification
Concentration: 1mg/ml	GeneID (NCBI): 952	CloneNo.: 3C6G4
Source: Mouse	ENSEMBL Gene ID: ENSG00000004468	
Isotype: IgG1	UNIPROT ID: P28907	
Immunogen Catalog Number: AG0487	Full Name: CD38 molecule	
	Calculated MW: 300 aa, 34 kDa	
	Observed MW: 45 kDa	

Applications

Tested Applications:
WB, IF/ICC, IF-P, ELISA

Species Specificity:
human, mouse

Background Information

CD38, also known as ADP-ribosyl cyclase 1, is a type II transmembrane glycoprotein with a short N-terminal cytoplasmic tail, a single membrane-spanning domain, and a C-terminal extracellular region with four N-glycosylation sites (PMID: 2319135). The extracellular domain of CD38 has bifunctional enzyme activities that catalyze synthesis of cyclic ADP ribose from nicotinamide adenine dinucleotide (NAD) and hydrolysis of cyclic ADP ribose to adenosine diphosphoribose (PMID: 10636863). CD38 is expressed on a variety of hematopoietic and non-hematopoietic cells and is involved in diverse processes such as generation of calcium-mobilizing metabolites, cell activation, and chemotaxis (PMID: 25938500).

Storage

Storage:
Store at -80°C.
The product is shipped with ice packs. Upon receipt, store it immediately at -80°C

Storage Buffer:
PBS only, pH7.3

For technical support and original validation data for this product please contact:

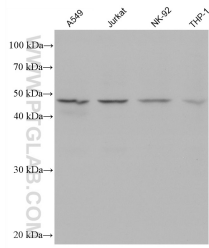
T: 4006900926

E: Proteintech-CN@ptglab.com

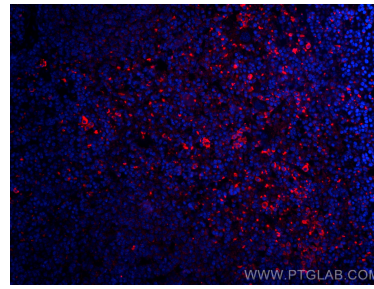
W: ptgcn.com

This product is exclusively available under Proteintech Group brand and is not available to purchase from any other manufacturer.

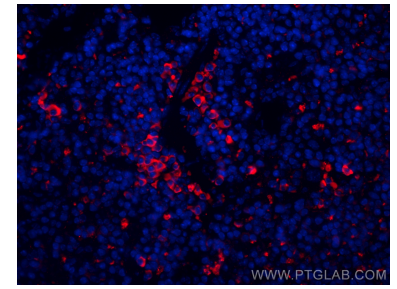
Selected Validation Data



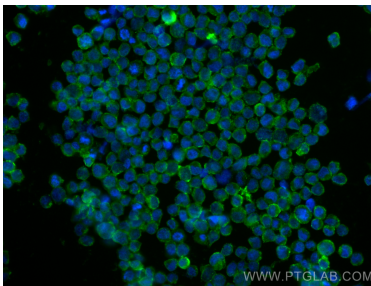
Various lysates were subjected to SDS PAGE followed by western blot with 60006-1-Ig (CD38 antibody) at dilution of 1:5000 incubated at room temperature for 1.5 hours. This data was developed using the same antibody clone with 60006-1-PBS in a different storage buffer formulation.



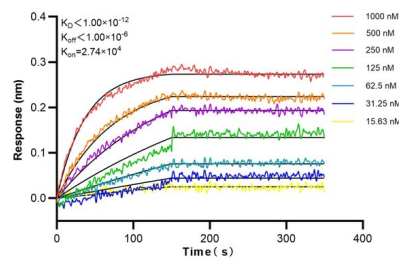
Immunofluorescent analysis of (4% PFA) fixed paraffin-embedded mouse spleen tissue using CD38 antibody (60006-1-Ig, Clone: 3C6G4) at dilution of 1:400 and CoraLite®594-Conjugated AffiniPure Goat Anti-Mouse IgG(H+L) (SA00013-3). Heat mediated antigen retrieval with Tris-EDTA buffer (pH 9.0). This data was developed using the same antibody clone with 60006-1-PBS in a different storage buffer formulation.



Immunofluorescent analysis of (4% PFA) fixed paraffin-embedded mouse spleen tissue using CD38 antibody (60006-1-Ig, Clone: 3C6G4) at dilution of 1:400 and CoraLite®594-Conjugated AffiniPure Goat Anti-Mouse IgG(H+L) (SA00013-3). Heat mediated antigen retrieval with Tris-EDTA buffer (pH 9.0). This data was developed using the same antibody clone with 60006-1-PBS in a different storage buffer formulation.



Immunofluorescent analysis of (4% PFA) fixed Raji cells using CD38 antibody (60006-1-Ig, Clone: 3C6G4) at dilution of 1:800 and CoraLite®488-Conjugated Goat Anti-Mouse IgG(H+L) (SA00013-1). This data was developed using the same antibody clone with 60006-1-PBS in a different storage buffer formulation.



Biolayer interferometry (BLI) kinetic assays of 60006-1-Ig against Human CD38 were performed. The affinity constant is below 1 pM.