

For Research Use Only

Beta Actin Monoclonal antibody, PBS Only



Catalog Number: 60008-1-PBS

Basic Information

Catalog Number: 60008-1-PBS	GenBank Accession Number: BC002409	Purification Method: Protein A purification
Size: 1 mg/ml	GeneID (NCBI): 60	CloneNo.: 7D2C10
Source: Mouse	UNIPROT ID: P60709	
Isotype: IgM	Full Name: actin, beta	
Immunogen Catalog Number: AG0297	Calculated MW: 375 aa, 42 kDa	
	Observed MW: 42 kDa	

Applications

Tested Applications:
WB, IHC, ELISA

Species Specificity:
human, mouse, rat, plant, Zebrafish

Background Information

Beta actin, also named as ACTB and F-Actin, belongs to the actin family. Actins are highly conserved globular proteins that are involved in various types of cell motility and are ubiquitously expressed in all eukaryotic cells. At least six isoforms of actins are known in mammals and other vertebrates: alpha (ACTC1, cardiac muscle 1), alpha 1 (ACTA1, skeletal muscle) and 2 (ACTA2, aortic smooth muscle), beta (ACTB), gamma 1 (ACTG1) and 2 (ACTG2, enteric smooth muscle). Beta and gamma 1 are two non-muscle actin proteins. Most actins consist of 376aa, while ACTG2 (rich in muscles) has 375aa and ACTG1(found in non-muscle cells) has only 374aa. Beta actin has been widely used as the internal control in RT-PCR and Western Blotting as a 42-kDa protein. However, the 37-40 kDa cleaved fragment of beta actin can be generated during apoptosis process. This antibody can recognize all the actins.

Storage

Storage:
Store at -80°C.

Storage Buffer:
PBS only

For technical support and original validation data for this product please contact:

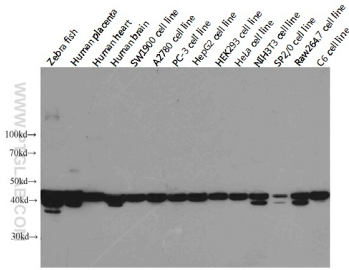
T: 4006900926

E: Proteintech-CN@ptglab.com

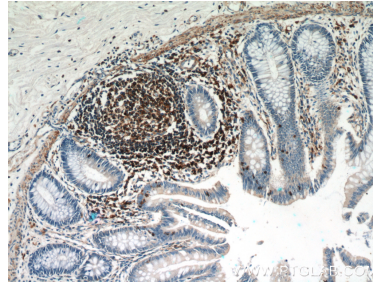
W: ptgcn.com

This product is exclusively available under Proteintech Group brand and is not available to purchase from any other manufacturer.

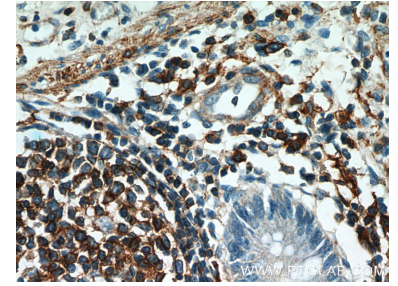
Selected Validation Data



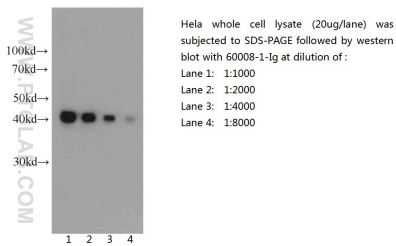
Western blot analysis of Beta-actin in various tissues and cell lines using Proteintech antibody 60008-1-Ig at a dilution of 1:5000. Extra bands were detected in some species with unknown reason. This data was developed using the same antibody clone with 60008-1-PBS in a different storage buffer formulation.



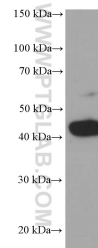
Immunohistochemical analysis of paraffin-embedded human colon using 60008-1-Ig(ACTB antibody) at dilution of 1:50 (under 10x lens). This data was developed using the same antibody clone with 60008-1-PBS in a different storage buffer formulation.



Immunohistochemical analysis of paraffin-embedded human colon using 60008-1-Ig(ACTB antibody) at dilution of 1:50 (under 40x lens). This data was developed using the same antibody clone with 60008-1-PBS in a different storage buffer formulation.



Western blot of HeLa cell with anti-Actin-Beta (60008-1-Ig) at various dilutions. This data was developed using the same antibody clone with 60008-1-PBS in a different storage buffer formulation.



Arabidopsis whole plant tissue were subjected to SDS PAGE followed by western blot with 60008-1-Ig (beta actin Antibody) at dilution of 1:2000 incubated at room temperature for 1.5 hours. This data was developed using the same antibody clone with 60008-1-PBS in a different storage buffer formulation.