

KEAP1 Monoclonal antibody

Catalog Number: 60027-1-Ig

Featured Product

86 Publications

Basic Information

Catalog Number:

60027-1-Ig

Size:

500 µg/ml

Source:

Mouse

Isotype:

IgA

Immunogen Catalog Number:

AG0779

GenBank Accession Number:

BC002930

GeneID (NCBI):

9817

UNIPROT ID:

Q14145

Full Name:

kelch-like ECH-associated protein 1

Calculated MW:

624 aa, 70 kDa

Observed MW:

60-70 kDa

Purification Method:

Thiophilic affinity chromatograph

CloneNo.:

4G10H9

Recommended Dilutions:

WB 1:1000-1:4000

IHC 1:50-1:500

IF 1:200-1:800

Applications

Tested Applications:

IF/ICC, IHC, WB, ELISA

Cited Applications:

WB, IF, IHC, CoIP

Species Specificity:

human, rat, mouse

Cited Species:

human, chicken, rat, MOUSE, pig

Note-IHC: suggested antigen retrieval with TE buffer pH 9.0; (*) Alternatively, antigen retrieval may be performed with citrate buffer pH 6.0

Positive Controls:

WB : 4T1 cells, Jurkat cells, HeLa cells, HSC-T6 cells, NIH/3T3 cells, MCF-7 cells

IHC : human pancreas cancer tissue, human kidney tissue, human skeletal muscle tissue

IF : HeLa cells,

Background Information

KEAP1, also named as INRF2, KIAA0132 and KLHL19, is part of a multiprotein complex that contains the CUL3-ROC1 ubiquitin ligase, which can ubiquitinate the N-terminal domain of NRF2. Two molecules of KEAP1 bind to two distinct sites in the N-terminal region of NRF2, the ETGE and DLG sites, which affect the KEAP1-NRF2 interaction and/or its physiological consequences. KEAP1 retains NFE2L2/NRF2 in the cytosol. It functions as substrate adapter protein for the E3 ubiquitin ligase complex formed by CUL3 and RBX1. It also retains BPTF in the cytosol. This antibody is a mouse monoclonal antibody raised against residues near the C terminus of human KEAP1.

Notable Publications

Author	Pubmed ID	Journal	Application
Jinliang Liu	34630847	Oxid Med Cell Longev	WB
Lei Zhao	34582963	Food Chem Toxicol	WB
Yue Li	36234847	Molecules	WB

Storage

Storage:

Store at -20°C. Stable for one year after shipment.

Storage Buffer:

PBS with 0.1% sodium azide and 50% glycerol pH 7.3.

Aliquoting is unnecessary for -20°C storage

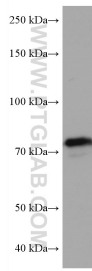
For technical support and original validation data for this product please contact:

T: 4006900926

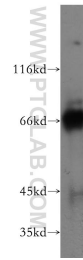
E: Proteintech-CN@ptglab.comW: ptgcn.com

This product is exclusively available under Proteintech Group brand and is not available to purchase from any other manufacturer.

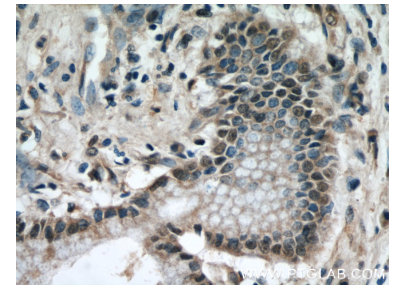
Selected Validation Data



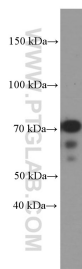
4T1 cells were subjected to SDS PAGE followed by western blot with 60027-1-Ig (KEAP1 antibody) at dilution of 1:2000 incubated at room temperature for 1.5 hours.



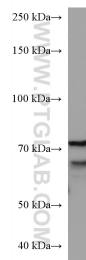
HeLa cells were subjected to SDS PAGE followed by western blot with 60027-1-Ig (KEAP1 antibody) at dilution of 1:400 incubated at room temperature for 1.5 hours.



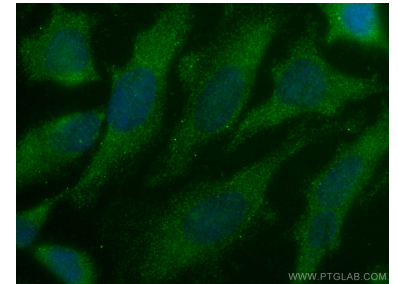
Immunohistochemical analysis of paraffin-embedded human pancreas cancer using 60027-1-Ig(KEAP1 antibody) at dilution of 1:50 (under 40x lens).



MCF-7 cells were subjected to SDS PAGE followed by western blot with 60027-1-Ig (KEAP1 Antibody) at dilution of 1:1000 incubated at room temperature for 1.5 hours.



Jurkat cells were subjected to SDS PAGE followed by western blot with 60027-1-Ig (KEAP1 antibody) at dilution of 1:2000 incubated at room temperature for 1.5 hours.



Immunofluorescent analysis of (-20°C Ethanol) fixed HeLa cells using KEAP1 antibody (60027-1-Ig, Clone: 4G10H9) at dilution of 1:400 and CoraLite@488-Conjugated AffiniPure Goat Anti-Mouse IgG(H+L).