

For Research Use Only

# DSE Monoclonal antibody, PBS Only

Catalog Number: 60041-1-PBS



## Basic Information

<b>Catalog Number:</b> 60041-1-PBS	<b>GenBank Accession Number:</b> BC039245	<b>Purification Method:</b> Thiophilic affinity chromatograph
<b>Size:</b> 1 mg/ml	<b>GeneID (NCBI):</b> 29940	<b>CloneNo.:</b> 2C9F7
<b>Source:</b> Mouse	<b>UNIPROT ID:</b> Q9UL01	
<b>Isotype:</b> IgM	<b>Full Name:</b> dermatan sulfate epimerase	
<b>Immunogen Catalog Number:</b> AG0695	<b>Calculated MW:</b> 958 aa, 110 kDa	
	<b>Observed MW:</b> 100 kDa	

## Applications

**Tested Applications:**  
WB, Indirect ELISA, IHC, IF

**Species Specificity:**  
human

## Background Information

DSE, also named as SART2 and DSEPI, is an enzyme that converts D-glucuronic acid to L-iduronic acid residues in dermatan sulphate biosynthesis. It is also identified to be a tumour-associated antigen. DSE is recognized by cytotoxic T cells (CTLs) and its enhanced expression in many cancers has been reported. DSE is a potential candidate for a tumour antigen with immunogenicity.

## Storage

**Storage:**  
Store at -80°C.  
**The product is shipped with ice packs. Upon receipt, store it immediately at -80°C**

**Storage Buffer:**  
PBS Only

For technical support and original validation data for this product please contact:

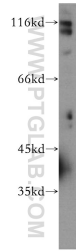
T: 4006900926

E: [Proteintech-CN@ptglab.com](mailto:Proteintech-CN@ptglab.com)

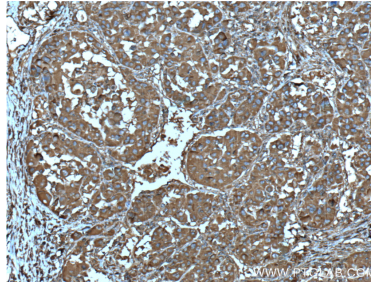
W: [ptgcn.com](http://ptgcn.com)

**This product is exclusively available under Proteintech Group brand and is not available to purchase from any other manufacturer.**

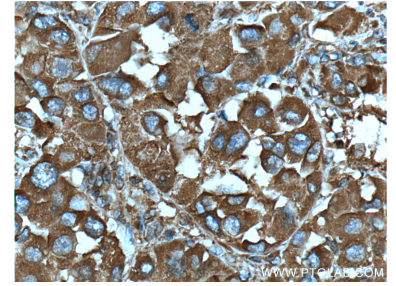
## Selected Validation Data



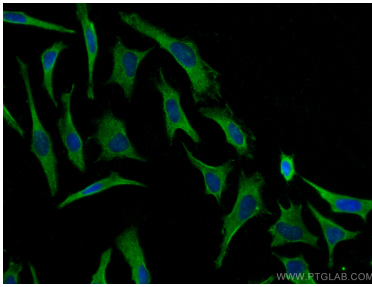
COLO 320 cells were subjected to SDS PAGE followed by western blot with 60041-1-Ig (DSE antibody) at dilution of 1:300 incubated at room temperature for 1.5 hours. This data was developed using the same antibody clone with 60041-1-PBS in a different storage buffer formulation.



Immunohistochemical analysis of paraffin-embedded human liver cancer tissue slide using 60041-1-Ig (DSE Antibody) at dilution of 1:200 (under 10x lens). Heat mediated antigen retrieval with Tris-EDTA buffer (pH 9.0). This data was developed using the same antibody clone with 60041-1-PBS in a different storage buffer formulation.



Immunohistochemical analysis of paraffin-embedded human liver cancer tissue slide using 60041-1-Ig (DSE Antibody) at dilution of 1:200 (under 40x lens). Heat mediated antigen retrieval with Tris-EDTA buffer (pH 9.0). This data was developed using the same antibody clone with 60041-1-PBS in a different storage buffer formulation.



Immunofluorescent analysis of (-20°C Methanol) fixed HeLa cells using DSE antibody (60041-1-Ig, Clone: 2C9F7) at dilution of 1:800 and CoraLite®488-Conjugated AffiniPure Goat Anti-Mouse IgG(H+L). This data was developed using the same antibody clone with 60041-1-PBS in a different storage buffer formulation.